

CDK4 antibody, C-term

Cat No. GTX77799

| | |
|--------------------|------------|
| Host | Rabbit |
| Clonality | Polyclonal |
| Isotype | IgG |
| Application | WB |
| Reactivity | Human |

Package
100 µg

APPLICATION

Application Note

*Optimal dilutions/concentrations should be determined by the researcher.

| Suggested dilution | Dilution |
|--------------------|---------------|
| WB | 0.2-2.5 µg/ml |

Not tested in other applications.

Calculated MW 34 kDa. ([Note](#))

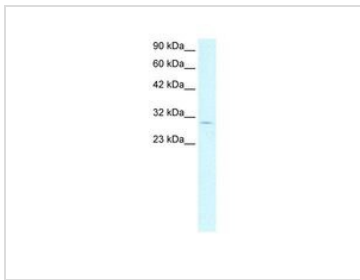
PROPERTIES

| | |
|----------------------|--|
| Form | Liquid |
| Buffer | 1x PBS buffer with 0.09% (w/v) sodium azide and 2% sucrose. |
| Storage | Store as concentrated solution. Centrifuge briefly prior to opening vial. For short-term storage (1-2 weeks), store at 4°C. For long-term storage, aliquot and store at -20°C or below. Avoid multiple freeze-thaw cycles. |
| Concentration | 0.5-1 mg/ml (Please refer to the vial label for the specific concentration.) |
| Immunogen | A synthetic peptide corresponding to a C-terminal region of Human CDK4 |
| Purification | Protein A purified |
| Conjugation | Unconjugated |
| Note | For laboratory use only. Not for any clinical, therapeutic, or diagnostic use in humans or animals. Not for animal or human consumption. |



For full product information, images and publications, please visit our [website](#).

DATA IMAGES

**GTX77799 WB Image**

WB analysis of HepG2 cells using GTX77799 CDK4 antibody at 1.0 μ g/ml.



For full product information, images and publications, please visit our [website](#).