

LMX1A antibody, Internal

Cat. No. GTX77819

Host	Rabbit
Clonality	Polyclonal
Isotype	IgG
Application	WB, IHC-P
Reactivity	Human

Package
50 µg

APPLICATION

Application Note

*Optimal dilutions/concentrations should be determined by the researcher.

Suggested dilution	Recommended dilution
WB	0.2-2.5 ug/ml
IHC-P	2-10 ug/ml

Not tested in other applications.

Calculated MW 43 kDa. ([Note](#))

PROPERTIES

Form	Liquid
Buffer	1x PBS buffer with 0.09% (w/v) sodium azide and 2% sucrose.
Storage	Store as concentrated solution. Centrifuge briefly prior to opening vial. For short-term storage (1-2 weeks), store at 4°C. For long-term storage, aliquot and store at -20°C or below. Avoid multiple freeze-thaw cycles.
Concentration	0.5-1 mg/ml (Please refer to the vial label for the specific concentration.)
Immunogen	A synthetic peptide corresponding to an Internal region of Human LMX1A
Purification	Protein A purified
Conjugation	Unconjugated

Note

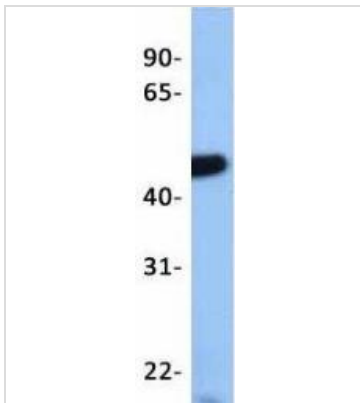
For laboratory research use only. Not for any clinical, therapeutic, or diagnostic use in humans or animals. Not for animal or human consumption.

Purchasers shall not, and agree not to enable third parties to, analyze, copy, reverse engineer or otherwise attempt to determine the structure or sequence of the product.



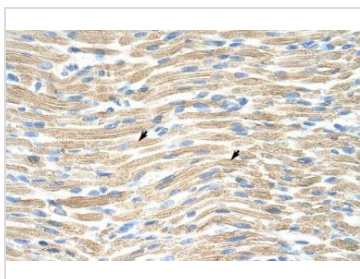
For full product information, images and publications, please visit our [website](#).

DATA IMAGES



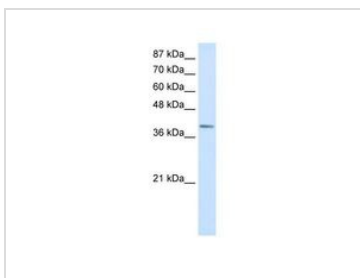
GTx77819 WB Image

WB analysis of human B lymphoblast cells using GTx77819 LMX1A antibody at 1 μ g/ml.



GTx77819 IHC-P Image

IHC-P analysis of human muscle tissue using GTx77819 LMX1A antibody at 4.0-8.0 μ g/ml.



GTx77819 WB Image

WB analysis of Jurkat cells using GTx77819 LMX1A antibody at 0.3125 μ g/ml.



For full product information, images and publications, please visit our [website](#).