

## Claudin 8 antibody, C-term

Cat. No. GTX77832

Host	Rabbit
Clonality	Polyclonal
Isotype	IgG
Applications	WB, ICC/IF, IHC-P, IHC
Reactivity	Human, Mouse

References ( 11 )

Package

100 µg

## Applications

## Application Note

\*Optimal dilutions/concentrations should be determined by the researcher.

Suggested dilution	Recommended dilution
WB	0.2-2.5 ug/ml
ICC/IF	Assay dependent
IHC-P	2-10 ug/ml
IHC	Assay dependent

Not tested in other applications.

Calculated MW 25 kDa. ( [Note](#) )

## Properties

Form	Liquid
Buffer	PBS, 2% Sucrose
Preservative	0.09% Sodium azide
Storage	Store as concentrated solution. Centrifuge briefly prior to opening vial. For short-term storage (1-2 weeks), store at 4°C. For long-term storage, aliquot and store at -20°C or below. Avoid multiple freeze-thaw cycles.
Concentration	0.5-1 mg/ml (Please refer to the vial label for the specific concentration.)
Immunogen	A synthetic peptide corresponding to a C-terminal region of Human Claudin 8
Purification	Protein A purified
Conjugation	Unconjugated

## Note

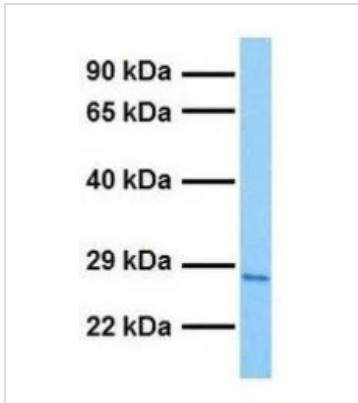
For laboratory research use only. Not for any clinical, therapeutic, or diagnostic use in humans or animals. Not for animal or human consumption.

Purchasers shall not, and agree not to enable third parties to, analyze, copy, reverse engineer or otherwise attempt to determine the structure or sequence of the product.



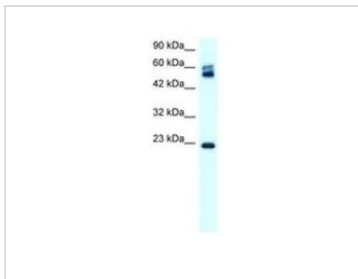
For full product information, images and publications, please visit our [website](#).

## DATA IMAGES



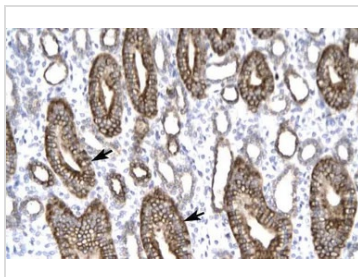
### GTX77832 WB Image

WB analysis of 293T cells using GTX77832 Claudin 8 antibody at 1.0 µg/ml.



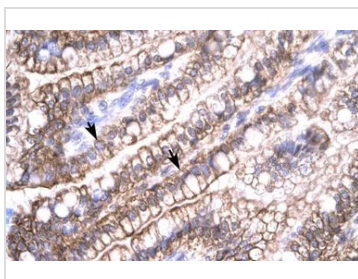
### GTX77832 WB Image

WB analysis of HepG2 cells using GTX77832 Claudin 8 antibody at 0.5-1.0 µg/ml.



### GTX77832 IHC-P Image

IHC-P analysis of human kidney tissue using GTX77832 Claudin 8 antibody at 4.0-8.0 µg/ml.



### GTX77832 IHC-P Image

IHC-P analysis of human intestine tissue using GTX77832 Claudin 8 antibody at 4.0-8.0 µg/ml.



For full product information, images and publications, please visit our [website](https://www.genetex.com).