

## FOXP3 antibody, N-term

Cat. No. GTX77889

Host	Rabbit
Clonality	Polyclonal
Isotype	IgG
Applications	WB, IHC-P, IHC-Fr
Reactivity	Human, Mouse

Package  
100 µg

## Applications

## Application Note

\*Optimal dilutions/concentrations should be determined by the researcher.

Suggested dilution	Recommended dilution
WB	Assay dependent
IHC-P	2-10 µg/ml
IHC-Fr	Assay dependent

Not tested in other applications.

Calculated MW 47 kDa. ( [Note](#) )

## Properties

Form	Liquid
Buffer	PBS, 2% Sucrose
Preservative	0.09% Sodium azide
Storage	Store as concentrated solution. Centrifuge briefly prior to opening vial. For short-term storage (1-2 weeks), store at 4°C. For long-term storage, aliquot and store at -20°C or below. Avoid multiple freeze-thaw cycles.
Concentration	0.5-1 mg/ml (Please refer to the vial label for the specific concentration.)
Immunogen	A synthetic peptide corresponding to a N-terminal region of Human FOXP3
Purification	Protein A purified
Conjugation	Unconjugated

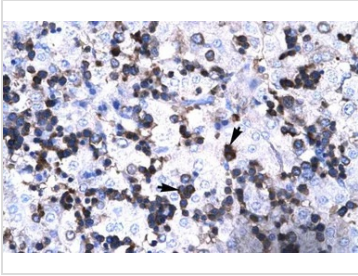
## Note

For laboratory research use only. Not for any clinical, therapeutic, or diagnostic use in humans or animals. Not for animal or human consumption.

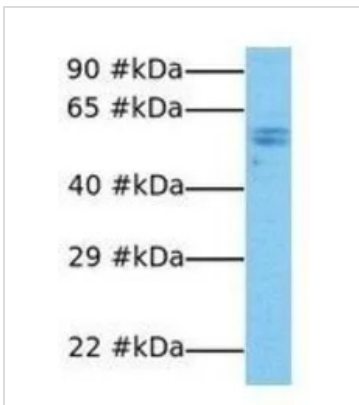
Purchasers shall not, and agree not to enable third parties to, analyze, copy, reverse engineer or otherwise attempt to determine the structure or sequence of the product.



For full product information, images and publications, please visit our [website](#).

**DATA IMAGES**

**GTX77889 IHC-P Image**

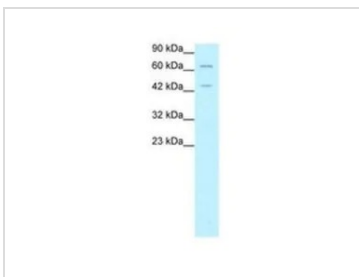
IHC-P analysis of human liver tissue using GTX77889 FOXP3 antibody at 4.0-8.0µg/ml.


**GTX77889 WB Image**

WB analysis of NCI-H226 cells using GTX77889 FOXP3 antibody at 1µg/ml.


**GTX77889 IHC-Fr Image**

IHC-Fr analysis of mouse spleen tissue using GTX77889 FOXP3 antibody at 1: 100. There are a few positive lymphocytes in the mouse spleen (2-3 cells/400x).


**GTX77889 WB Image**

WB analysis of HepG2 cells using GTX77889 FOXP3 antibody at 5.0-8.0µg/ml.



For full product information, images and publications, please visit our [website](https://www.genetex.com).