

TAF15 antibody, N-term

Cat. No. GTX77901

Host	Rabbit
Clonality	Polyclonal
Isotype	IgG
Applications	WB, IHC-P, IP, IHC
Reactivity	Human, Drosophila, Pig

References (5)

Package

50 µg

Applications

Application Note

*Optimal dilutions/concentrations should be determined by the researcher.

Suggested dilution	Recommended dilution
WB	0.2-2.5 ug/ml
IHC-P	2-10 ug/ml
IP	Assay dependent
IHC	Assay dependent

Not tested in other applications.

Calculated MW 62 kDa. ([Note](#))

Properties

Form	Liquid
Buffer	PBS, 2% Sucrose
Preservative	0.09% Sodium azide
Storage	Store as concentrated solution. Centrifuge briefly prior to opening vial. For short-term storage (1-2 weeks), store at 4°C. For long-term storage, aliquot and store at -20°C or below. Avoid multiple freeze-thaw cycles.
Concentration	0.5-1 mg/ml (Please refer to the vial label for the specific concentration.)
Immunogen	A synthetic peptide corresponding to a N-terminal region of Human TAF15
Purification	Affinity Purified
Conjugation	Unconjugated

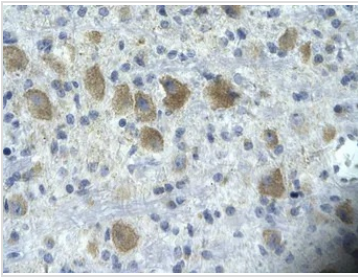
Note

For laboratory research use only. Not for any clinical, therapeutic, or diagnostic use in humans or animals. Not for animal or human consumption.

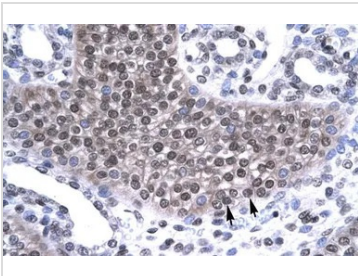
Purchasers shall not, and agree not to enable third parties to, analyze, copy, reverse engineer or otherwise attempt to determine the structure or sequence of the product.

For full product information, images and publications, please visit our [website](#).

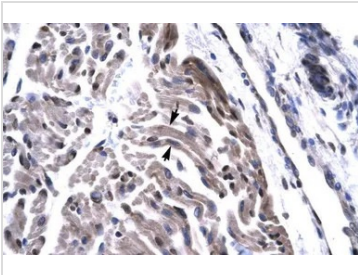
DATA IMAGES

**GTX77901 IHC-P Image**

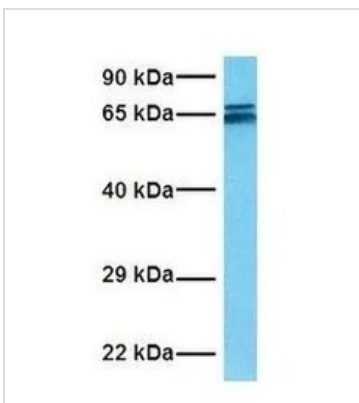
IHC-P analysis of human brain tissue using GTX77901 TAF15 antibody at 4.0-8.0µg/ml.

**GTX77901 IHC-P Image**

IHC-P analysis of human kidney tissue using GTX77901 TAF15 antibody at 4.0-8.0µg/ml.

**GTX77901 IHC-P Image**

IHC-P analysis of human skeletal muscle tissue using GTX77901 TAF15 antibody at 4.0-8.0µg/ml.

**GTX77901 WB Image**

WB analysis of 293T cells using GTX77901 TAF15 antibody at 1µg/ml.



For full product information, images and publications, please visit our [website](#).