

GATA2 antibody, N-term

Cat. No. GTX77904

Host	Rabbit
Clonality	Polyclonal
Isotype	IgG
Applications	WB, IHC-P
Reactivity	Human, Mouse

Package
100 µg

Applications

Application Note

*Optimal dilutions/concentrations should be determined by the researcher.

Suggested dilution	Recommended dilution
WB	0.2-2.5 ug/ml
IHC-P	2-10 ug/ml

Not tested in other applications.

Calculated MW 51 kDa. ([Note](#))

Properties

Form	Liquid
Buffer	PBS, 2% Sucrose
Preservative	0.09% Sodium azide
Storage	Store as concentrated solution. Centrifuge briefly prior to opening vial. For short-term storage (1-2 weeks), store at 4°C. For long-term storage, aliquot and store at -20°C or below. Avoid multiple freeze-thaw cycles.
Concentration	0.5-1 mg/ml (Please refer to the vial label for the specific concentration.)
Immunogen	A synthetic peptide corresponding to a N-terminal region of Human GATA2
Purification	Protein A purified
Conjugation	Unconjugated

Note

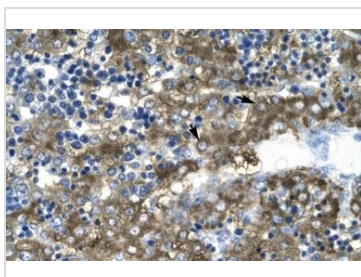
For laboratory research use only. Not for any clinical, therapeutic, or diagnostic use in humans or animals. Not for animal or human consumption.

Purchasers shall not, and agree not to enable third parties to, analyze, copy, reverse engineer or otherwise attempt to determine the structure or sequence of the product.



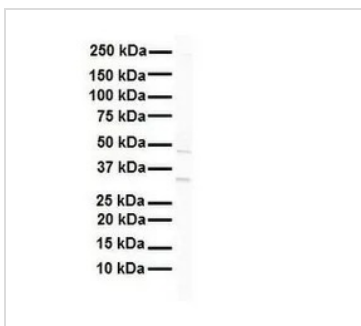
For full product information, images and publications, please visit our [website](#).

DATA IMAGES



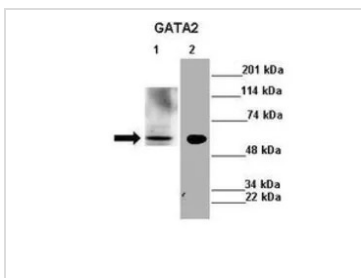
GTX77904 IHC-P Image

IHC-P analysis of human liver tissue using GTX77904 GATA2 antibody at 4.0-8.0µg/ml.



GTX77904 WB Image

WB analysis of K562 cells using GTX77904 GATA2 antibody at 1µg/ml.

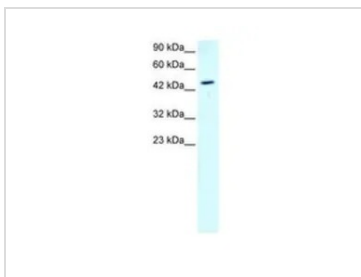


GTX77904 WB Image

WB analysis of mouse liver and N2a cell lysate using GTX77904 GATA2 antibody at 1:500.

Lane 1: 30µg mouse liver lysate

Lane 2: 30µg mouse N2a cell lysate



GTX77904 WB Image

WB analysis of K562 cells using GTX77904 GATA2 antibody at 1.0-2.0µg/ml.



For full product information, images and publications, please visit our [website](#).