

ThPok antibody, Internal

Cat. No. GTX77909

Host	Rabbit
Clonality	Polyclonal
Isotype	IgG
Applications	WB, IHC-P
Reactivity	Human

Package

100 µg

Applications

Application Note

*Optimal dilutions/concentrations should be determined by the researcher.

Suggested dilution	Recommended dilution
WB	0.2-2.5 ug/ml
IHC-P	2-10 ug/ml

Not tested in other applications.

Calculated MW 58 kDa. ([Note](#))

Properties

Form	Liquid
Buffer	PBS, 2% Sucrose
Preservative	0.09% Sodium azide
Storage	Store as concentrated solution. Centrifuge briefly prior to opening vial. For short-term storage (1-2 weeks), store at 4°C. For long-term storage, aliquot and store at -20°C or below. Avoid multiple freeze-thaw cycles.
Concentration	0.5-1 mg/ml (Please refer to the vial label for the specific concentration.)
Immunogen	A synthetic peptide corresponding to an Internal region of Human ThPok
Purification	Protein A purified
Conjugation	Unconjugated

Note

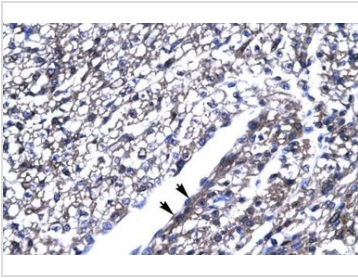
For laboratory research use only. Not for any clinical, therapeutic, or diagnostic use in humans or animals. Not for animal or human consumption.

Purchasers shall not, and agree not to enable third parties to, analyze, copy, reverse engineer or otherwise attempt to determine the structure or sequence of the product.



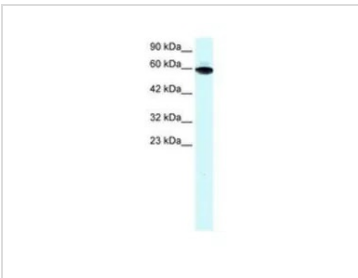
For full product information, images and publications, please visit our [website](#).

DATA IMAGES



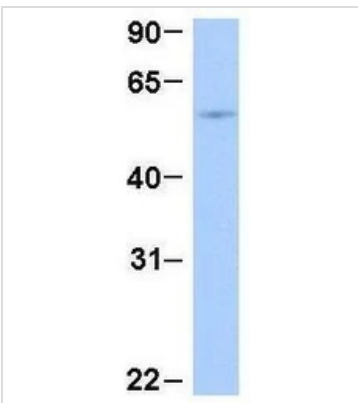
GTX77909 IHC-P Image

IHC-P analysis of human heart tissue using GTX77909 ThPok antibody at 4.0-8.0µg/ml.



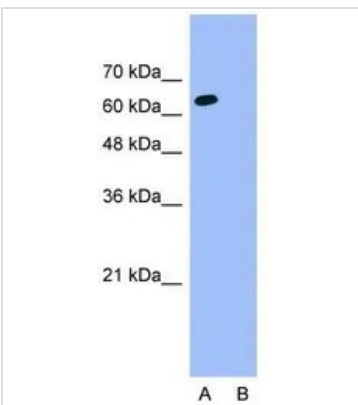
GTX77909 WB Image

WB analysis of HepG2 cells using GTX77909 ThPok antibody at 1.0-2.0µg/ml.



GTX77909 WB Image

WB analysis of human fetal liver tissue using GTX77909 ThPok antibody at 1µg/ml.



GTX77909 WB Image

WB analysis of HepG2 cells using GTX77909 ThPok antibody at 1.25µg/ml.

Lane A : Primary antibody

Lane B : Primary antibody + Blocking peptide



For full product information, images and publications, please visit our [website](https://www.genetex.com).