

## LGR5 antibody

**Cat. No. GTX77961**

<b>Host</b>	Rabbit
<b>Clonality</b>	Polyclonal
<b>Isotype</b>	IgG
<b>Applications</b>	IHC-P
<b>Reactivity</b>	Human

**Package**  
25 µg

## Applications

**Application Note**

\*Optimal dilutions/concentrations should be determined by the researcher.

Suggested dilution	Recommended dilution
IHC-P	5 - 10 µg/ml

Not tested in other applications.

**Calculated MW** 100 kDa. ([Note](#))

## Properties

<b>Form</b>	Liquid
<b>Buffer</b>	PBS
<b>Preservative</b>	0.1% Sodium azide
<b>Storage</b>	Store as concentrated solution. Centrifuge briefly prior to opening vial. For short-term storage (1-2 weeks), store at 4°C. For long-term storage, aliquot and store at -20°C or below. Avoid multiple freeze-thaw cycles.
<b>Concentration</b>	1 mg/ml (Please refer to the vial label for the specific concentration.)
<b>Immunogen</b>	Synthetic 16 amino acid peptide from 1st cytoplasmic domain of human GPR49 / LGR5.
<b>Purification</b>	Purified by affinity chromatography
<b>Conjugation</b>	Unconjugated

**Note**

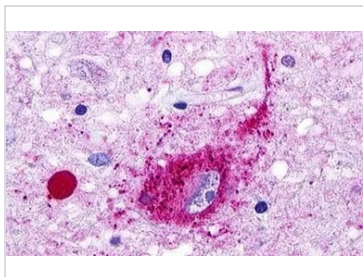
For laboratory research use only. Not for any clinical, therapeutic, or diagnostic use in humans or animals. Not for animal or human consumption.

Purchasers shall not, and agree not to enable third parties to, analyze, copy, reverse engineer or otherwise attempt to determine the structure or sequence of the product.

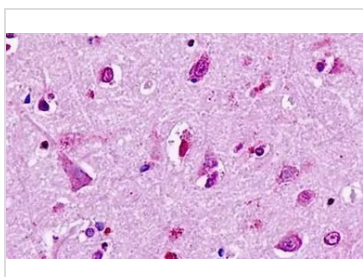


For full product information, images and publications, please visit our [website](#).

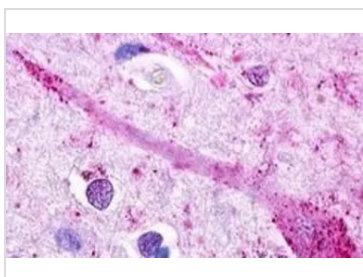
## DATA IMAGES

**GTX77961 IHC-P Image**

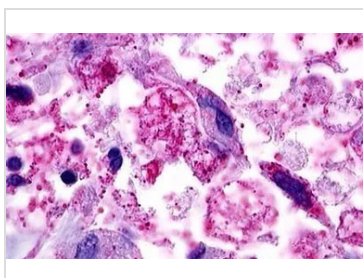
IHC-P analysis of brain, hypothalamus, neuron tissue using GTX77961 LGR5 antibody.

**GTX77961 IHC-P Image**

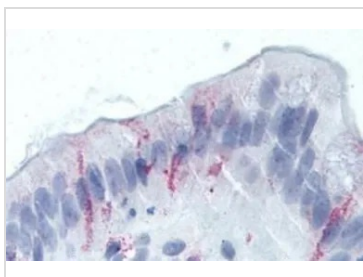
IHC-P analysis of human, brain, neurons tissue using GTX77961 LGR5 antibody.

**GTX77961 IHC-P Image**

IHC-P analysis of brain, cortex, neuron tissue using GTX77961 LGR5 antibody.

**GTX77961 IHC-P Image**

IHC-P analysis of brain, glioblastoma tissue using GTX77961 LGR5 antibody.

**GTX77961 IHC-P Image**

IHC-P analysis of human human colon tissue using GTX77961 LGR5 antibody.  
Antigen retrieval : Heat-induced antigen retrieval



For full product information, images and publications, please visit our [website](#).