

## NR4A3 antibody

Cat. No. GTX78011

Host	Rabbit
Clonality	Polyclonal
Isotype	IgG
Applications	IHC-P, IHC
Reactivity	Human, Dog, Bat

References ( 2 )

Package

25 µg

## Applications

## Application Note

\*Optimal dilutions/concentrations should be determined by the researcher.

Suggested dilution	Recommended dilution
IHC-P	10 - 20 µg/ml
IHC	Assay dependent

Not tested in other applications.

## Properties

Form	Liquid
Buffer	PBS
Preservative	0.1% Sodium azide
Storage	Store as concentrated solution. Centrifuge briefly prior to opening vial. For short-term storage (1-2 weeks), store at 4°C. For long-term storage, aliquot and store at -20°C or below. Avoid multiple freeze-thaw cycles.
Concentration	1 mg/ml (Please refer to the vial label for the specific concentration.)
Immunogen	Synthetic 20 amino acid peptide near C-terminus of human NR4A3.
Purification	Purified by affinity chromatography
Conjugation	Unconjugated

## Note

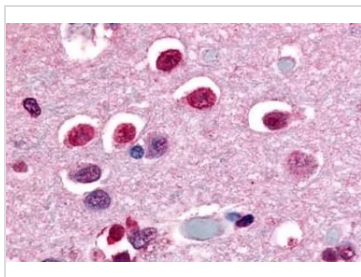
For laboratory research use only. Not for any clinical, therapeutic, or diagnostic use in humans or animals. Not for animal or human consumption.

Purchasers shall not, and agree not to enable third parties to, analyze, copy, reverse engineer or otherwise attempt to determine the structure or sequence of the product.



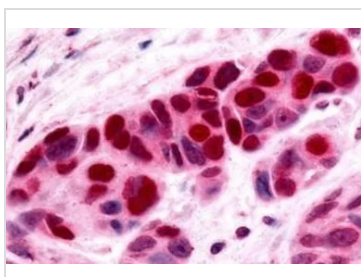
For full product information, images and publications, please visit our [website](#).

## DATA IMAGES



### GTX78011 IHC-P Image

IHC-P analysis of human brain, neurons and glia tissue using GTX78011 NR4A3 antibody.  
Antigen retrieval : Heat-induced antigen retrieval



### GTX78011 IHC-P Image

IHC-P analysis of human skin, melanoma tissue using GTX78011 NR4A3 antibody.  
Antigen retrieval : Heat-induced antigen retrieval



For full product information, images and publications, please visit our [website](#).