

CLACP antibody

Cat. No. GTX78175

Host	Rabbit
Clonality	Polyclonal
Isotype	IgG
Applications	WB, IHC
Reactivity	Human

Package
100 µg

Applications

Application Note

Recommended dilution for Western blot 1:500-1:1,000. However, the investigator should determine the optimal dilution for a specific application such as immunohistochemistry.

Calculated MW 65 kDa. ([Note](#))**Product Note** Reacts with residues 430-443 [DYNGNLHEALQRIT] of the NC3 region of human and mouse CLAC-P.

Properties

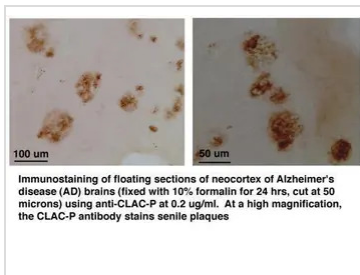
Form Liquid**Buffer** PBS**Preservative** 0.02% Sodium azide**Storage** Store as concentrated solution. Centrifuge briefly prior to opening vial. For short-term storage (1-2 weeks), store at 4°C. For long-term storage, aliquot and store at -20°C or below. Avoid multiple freeze-thaw cycles.**Concentration** 1 mg/ml (Please refer to the vial label for the specific concentration.)**Purification** Affinity purified IgG**Conjugation** Unconjugated**Note** For laboratory research use only. Not for any clinical, therapeutic, or diagnostic use in humans or animals. Not for animal or human consumption.

Purchasers shall not, and agree not to enable third parties to, analyze, copy, reverse engineer or otherwise attempt to determine the structure or sequence of the product.



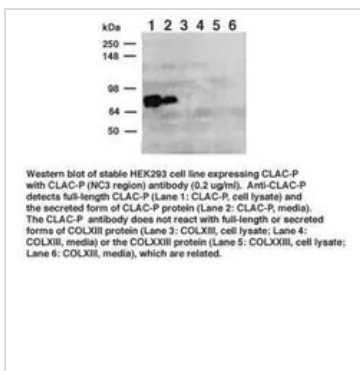
For full product information, images and publications, please visit our [website](#).

DATA IMAGES



GTX78175 IHC Image

GTX78175-IHC.jpg



GTX78175 WB Image



For full product information, images and publications, please visit our [website](#).