

C3 / C3a antibody

Cat. No. GTX78198

Host	Chicken
Clonality	Polyclonal
Isotype	IgY
Applications	WB, ELISA
Reactivity	Human

Package
100 µg

Applications

Application Note

This product can be used at 1:2,000 to 1:10,000 for both ELISA and immunoblot testing. User needs to try out the titrations for optimization in assay.

Calculated MW	187 kDa. (Note)
Product Note	Binds to a strong band at about 97kDa (C3a), two weaker bands with one at about 115kDa (C3 alpha) and the other at 36-50kDa.

Properties

Form	Liquid
Buffer	PBS
Preservative	0.02% Sodium azide
Storage	Store as concentrated solution. Centrifuge briefly prior to opening vial. Store at 4°C. DO NOT FREEZE.
Concentration	1 mg/ml (Please refer to the vial label for the specific concentration.)
Immunogen	Human C3 alpha peptide aa 678-692
Purification	Affinity purified with antigen
Conjugation	Unconjugated

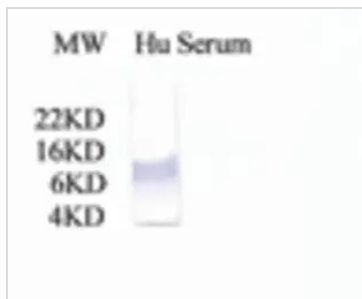
Note

For laboratory research use only. Not for any clinical, therapeutic, or diagnostic use in humans or animals. Not for animal or human consumption.

Purchasers shall not, and agree not to enable third parties to, analyze, copy, reverse engineer or otherwise attempt to determine the structure or sequence of the product.



For full product information, images and publications, please visit our [website](#).

DATA IMAGES

GTX78198 WB Image

Western Blot analysis of GTX78198 chicken anti-human C3a on human serum (1 ul).



For full product information, images and publications, please visit our [website](https://www.genetex.com).