

## C3 / C3a antibody

Cat. No. GTX78199

Host	Chicken
Clonality	Polyclonal
Isotype	IgY
Applications	WB, ELISA
Reactivity	Mouse

**Package**  
100 µg

## Applications

## Application Note

This product can be used at 1:2,000 to 1:10,000 for both ELISA and immunoblot testing. User needs to try out the titrations for optimization in assay.

Calculated MW	187 kDa. ( <a href="#">Note</a> )
Product Note	Binds to a strong band at about 9KDa (C3a), two weaker bands with one at about 115KDa (C3 alpha) and the other at 25-36KDa (unknown or partial C3 cleavage.)

## Properties

Form	Liquid
Buffer	PBS
Preservative	0.02% Sodium azide
Storage	Store as concentrated solution. Centrifuge briefly prior to opening vial. For short-term storage (1-2 weeks), store at 4°C. For long-term storage, aliquot and store at -20°C or below. Avoid multiple freeze-thaw cycles.
Concentration	1 mg/ml (Please refer to the vial label for the specific concentration.)
Immunogen	Mouse C3 alpha peptide aa 678-692
Purification	Affinity purified with antigen.
Conjugation	Unconjugated

## Note

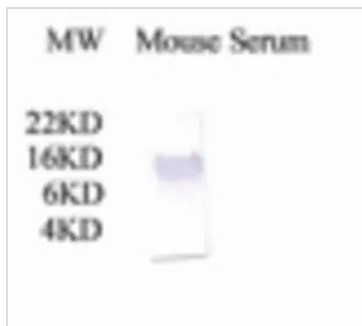
For laboratory research use only. Not for any clinical, therapeutic, or diagnostic use in humans or animals. Not for animal or human consumption.

Purchasers shall not, and agree not to enable third parties to, analyze, copy, reverse engineer or otherwise attempt to determine the structure or sequence of the product.



For full product information, images and publications, please visit our [website](#).

## DATA IMAGES



### GTX78199 WB Image

Western Blot analysis of GTX78199 chicken anti-mouse C3a on mouse serum (1 ul).



For full product information, images and publications, please visit our [website](#).