

## Cytochrome C antibody

Cat. No. GTX78200

Host	Chicken
Clonality	Polyclonal
Isotype	IgY
Applications	WB, ELISA
Reactivity	Human, Mouse, Rat, Bovine

Package  
100 µg

## Applications

## Application Note

The product can be used at 1:2,000 to 1:10,000 for both ELISA and immunoblot testing. Do not use dry milk in blocking or dilution beffer in your assay. Please use BSA (3-5% in blocking and 1-3% in dilution buffers) in your assay. User needs to try out the tiration for immunohistochemical testing.

Calculated MW 12 kDa. ( [Note](#) )

## Properties

Form	Liquid
Buffer	PBS
Preservative	0.02% Sodium azide
Storage	Store as concentrated solution. Centrifuge briefly prior to opening vial. For short-term storage (1-2 weeks), store at 4°C. For long-term storage, aliquot and store at -20°C or below. Avoid multiple freeze-thaw cycles.
Concentration	1 mg/ml (Please refer to the vial label for the specific concentration.)
Immunogen	Bovine Cytochrome C
Purification	Affinity purified with antigen.
Conjugation	Unconjugated

## Note

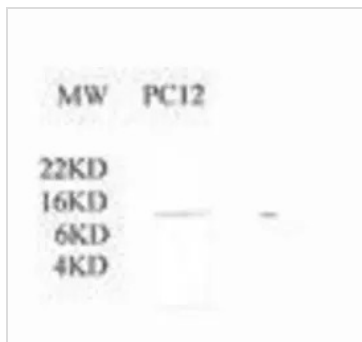
For laboratory research use only. Not for any clinical, therapeutic, or diagnostic use in humans or animals. Not for animal or human consumption.

Purchasers shall not, and agree not to enable third parties to, analyze, copy, reverse engineer or otherwise attempt to determine the structure or sequence of the product.



For full product information, images and publications, please visit our [website](#).

## DATA IMAGES



### GTX78200 WB Image

Western Blot analysis of chicken anti-cytochrome c on rat PC12 cell lysate (30ug).



For full product information, images and publications, please visit our [website](https://www.genetex.com).