

# Cytochrome C antibody

**Cat. No. GTX78201**

<b>Host</b>	Rabbit
<b>Clonality</b>	Polyclonal
<b>Isotype</b>	IgG
<b>Applications</b>	WB, ELISA
<b>Reactivity</b>	Human, Mouse, Rat, Bovine

**Package**  
100 µl

## Applications

### Application Note

The product can be used at 1:2,000 to 1:10,000 for both ELISA and immunoblot testing. Do not use dry milk in blocking or dilution beffer in your assay. Please use BSA (3-5% in blocking and 1-3% in dilution buffers) in your assay. User needs to try out the tiration for immunohistochemical testing.

**Calculated MW** 12 kDa. ( [Note](#) )

## Properties

<b>Form</b>	Liquid
<b>Buffer</b>	PBS
<b>Preservative</b>	0.02% Sodium azide
<b>Storage</b>	Store as concentrated solution. Centrifuge briefly prior to opening vial. For short-term storage (1-2 weeks), store at 4°C. For long-term storage, aliquot and store at -20°C or below. Avoid multiple freeze-thaw cycles.
<b>Concentration</b>	1 mg/ml (Please refer to the vial label for the specific concentration.)
<b>Immunogen</b>	Bovine Cytochrome C
<b>Purification</b>	Affinity purified with antigen.
<b>Conjugation</b>	Unconjugated

### Note

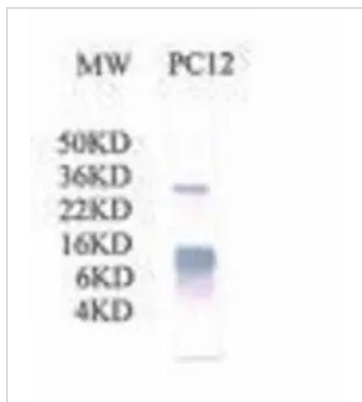
For laboratory research use only. Not for any clinical, therapeutic, or diagnostic use in humans or animals. Not for animal or human consumption.

Purchasers shall not, and agree not to enable third parties to, analyze, copy, reverse engineer or otherwise attempt to determine the structure or sequence of the product.



For full product information, images and publications, please visit our [website](#).

## DATA IMAGES



### GTX78201 WB Image

Western Blot analysis shows that rabbit anti-cytochrome c binds to a band at MW about 12KDa and a band at about 24KDa (doublet cytochrome c) on rat PC12 cell lysate (30 ug).



For full product information, images and publications, please visit our [website](#).