

Ghrelin antibody

Cat. No. GTX78203

Host	Chicken
Clonality	Polyclonal
Isotype	IgY
Applications	ELISA
Reactivity	Human, Mouse

Package

200 µg

Applications

Application Note

For ELISA as coating antibody: Use at a dilution of 1:500 to 1:2,000. Optimal dilutions/concentrations should be determined by the researcher.

Properties

Form	Liquid
Buffer	PBS
Preservative	0.02% Sodium azide
Storage	Store as concentrated solution. Centrifuge briefly prior to opening vial. For short-term storage (1-2 weeks), store at 4°C. For long-term storage, aliquot and store at -20°C or below. Avoid multiple freeze-thaw cycles.
Concentration	1 mg/ml (Please refer to the vial label for the specific concentration.)
Immunogen	ESKKPPAKLQPR
Purification	Affinity purified with antigen
Conjugation	Unconjugated

Note

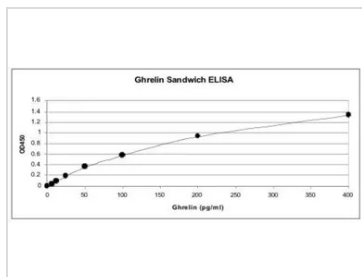
For laboratory research use only. Not for any clinical, therapeutic, or diagnostic use in humans or animals. Not for animal or human consumption.

Purchasers shall not, and agree not to enable third parties to, analyze, copy, reverse engineer or otherwise attempt to determine the structure or sequence of the product.



For full product information, images and publications, please visit our [website](#).

DATA IMAGES



GTX78203 ELISA Image

GTX78203 in Sandwich ELISA for analysis of active ghrelin. The antibody was coated on ELISA plate. Various concentrations of active ghrelin were incubated and detected with GTX78202 at a 1:1000 dilution.



For full product information, images and publications, please visit our [website](#).