

p53 antibody [BP53-12] (FITC)

Cat. No. GTX78241

Host	Mouse
Clonality	Monoclonal
Isotype	IgG2a
Applications	FCM, IHC
Reactivity	Human, Primate

Package
100 µg

Applications

Application Note

*Optimal dilutions/concentrations should be determined by the researcher.

Suggested dilution	Recommended dilution
FCM	Assay dependent
IHC	Assay dependent

Not tested in other applications.

Product Note This antibody recognizes defined epitope (aa 16-25) on human p53.

Properties

Form	Liquid
Buffer	PBS
Preservative	15mM Sodium azide
Storage	Store as concentrated solution. Centrifuge briefly prior to opening vial. Store at 4°C. DO NOT FREEZE. Protect from light.
Concentration	1 mg/ml (Please refer to the vial label for the specific concentration.)
Immunogen	Bacterially expressed full-length wild-type p53
Purification	Purified by size-exclusion chromatography
Conjugation	Fluorescein isothiocyanate (FITC) Wavelength

Note

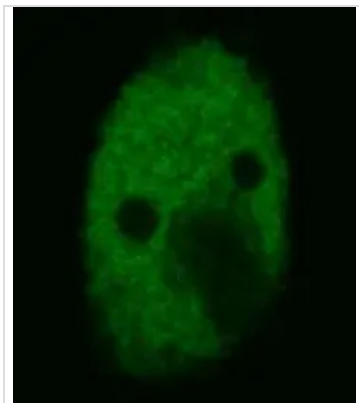
For laboratory research use only. Not for any clinical, therapeutic, or diagnostic use in humans or animals. Not for animal or human consumption.

Purchasers shall not, and agree not to enable third parties to, analyze, copy, reverse engineer or otherwise attempt to determine the structure or sequence of the product.



For full product information, images and publications, please visit our [website](#).

DATA IMAGES



GTX78241 IHC Image

Confocal microscopy of human HeLa cells using anti-p53 (BP53-12; FITC) (GTX78241). The expression of p53 protein was enhanced by intercalating reagent. Cells were fixed and permeabilized before incubation with the p53-FITC MAb.



For full product information, images and publications, please visit our [website](#).