

CD2 antibody [MEM-65] (Biotin)

Cat. No. GTX78242

Host	Mouse
Clonality	Monoclonal
Isotype	IgG1
Applications	FCM, IP
Reactivity	Human

Package
100 µg

Applications

Application Note

*Optimal dilutions/concentrations should be determined by the researcher.

Suggested dilution	Recommended dilution
FCM	Assay dependent
IP	Assay dependent

Not tested in other applications.

Product Note

This antibody recognizes a unique epitope of CD2, a 50 kDa glycoprotein present on the human peripheral blood T-lymphocytes and NK cells; also expressed by all thymocytes.

Properties

Form	Liquid
Buffer	PBS
Preservative	15mM Sodium azide
Storage	Store as concentrated solution. Centrifuge briefly prior to opening vial. Store at 4°C. DO NOT FREEZE.
Concentration	1 mg/ml (Please refer to the vial label for the specific concentration.)
Immunogen	Human peripheral T cells.
Purification	Purified IgG
Conjugation	Biotin The reagent is free of unconjugated biotin.

Note

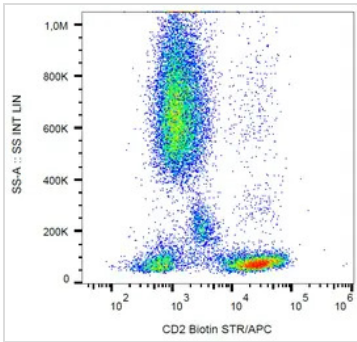
For laboratory research use only. Not for any clinical, therapeutic, or diagnostic use in humans or animals. Not for animal or human consumption.

Purchasers shall not, and agree not to enable third parties to, analyze, copy, reverse engineer or otherwise attempt to determine the structure or sequence of the product.



For full product information, images and publications, please visit our [website](#).

DATA IMAGES

**GTX78242 FCM Image**

FACS analysis of human peripheral blood using GTX78242 CD2 antibody [MEM-65] (Biotin).



For full product information, images and publications, please visit our [website](#).