

# CD4 antibody [MEM-115]

**Cat. No. GTX78249**

<b>Host</b>	Mouse
<b>Clonality</b>	Monoclonal
<b>Isotype</b>	IgG2a
<b>Applications</b>	FCM, IP
<b>Reactivity</b>	Human

**Package**  
100 µg

## Applications

### Application Note

\*Optimal dilutions/concentrations should be determined by the researcher.

Suggested dilution	Recommended dilution
FCM	Assay dependent
IP	Assay dependent

Not tested in other applications.

**Product Note** This antibody recognizes an epitope in the D1 domain of CD4 antigen.

## Properties

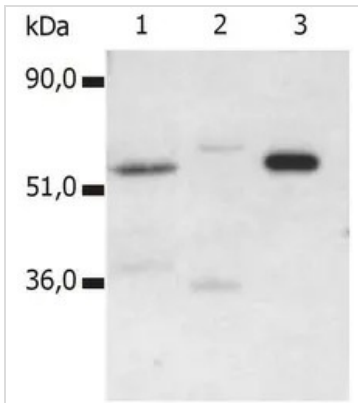
<b>Form</b>	Liquid
<b>Buffer</b>	PBS
<b>Preservative</b>	15mM Sodium azide
<b>Storage</b>	Store as concentrated solution. Centrifuge briefly prior to opening vial. Store at 4°C. DO NOT FREEZE.
<b>Concentration</b>	1 mg/ml (Please refer to the vial label for the specific concentration.)
<b>Immunogen</b>	Human thymocytes and T lymphocytes.
<b>Purification</b>	Protein A purified
<b>Conjugation</b>	Unconjugated

**Note** For laboratory research use only. Not for any clinical, therapeutic, or diagnostic use in humans or animals. Not for animal or human consumption.

Purchasers shall not, and agree not to enable third parties to, analyze, copy, reverse engineer or otherwise attempt to determine the structure or sequence of the product.



For full product information, images and publications, please visit our [website](#).

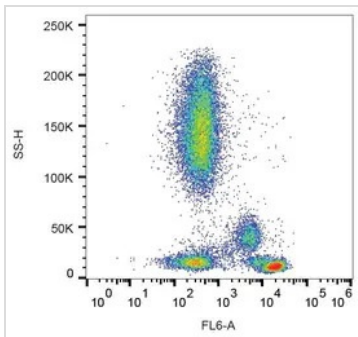
**DATA IMAGES**

**GTX78249 IP Image**

IP analysis of T cells isolated from fresh buffy coats using GTX78249 CD4 antibody [MEM-115]. The signal was detected by GTX21089 CD4 antibody [MEM-241] in WB assay.

Lane 1 : original lysate of T cells

Lane 2 : immunoprecipitate by negative control antibody

Lane 3 : immunoprecipitate by GTX78249


**GTX78249 FCM Image**

FACS analysis of human peripheral blood using GTX78249 CD4 antibody [MEM-115].



For full product information, images and publications, please visit our [website](https://www.genetex.com).