

# CD8 antibody [MEM-31] (FITC)

**Cat. No. GTX78258**

<b>Host</b>	Mouse
<b>Clonality</b>	Monoclonal
<b>Isotype</b>	IgG2a
<b>Applications</b>	FCM
<b>Reactivity</b>	Human

**Package**  
100 test

## Applications

### Application Note

\*Optimal dilutions/concentrations should be determined by the researcher.

Suggested dilution	Recommended dilution
FCM	20 µl reagent / 100 µl of whole blood or 10 <sup>6</sup> cells in a suspension

Not tested in other applications.

### Product Note

This antibody recognizes a conformationally-dependent epitope of CD8. The antibody does not react with formaldehyde-fixed cells; negative in Western blotting application.

## Properties

<b>Form</b>	Liquid
<b>Buffer</b>	PBS
<b>Preservative</b>	15mM Sodium azide
<b>Storage</b>	Store as concentrated solution. Centrifuge briefly prior to opening vial. Store at 4°C. DO NOT FREEZE. Protect from light.
<b>Concentration</b>	Batch dependent (Please refer to the vial label for the specific concentration.)
<b>Immunogen</b>	Crude thymus membrane fraction.
<b>Purification</b>	Purified by size-exclusion chromatography
<b>Conjugation</b>	Fluorescein isothiocyanate (FITC) <a href="#">Wavelength</a>

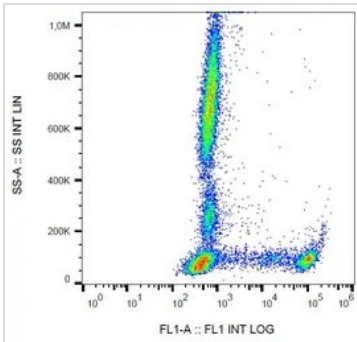
### Note

For laboratory research use only. Not for any clinical, therapeutic, or diagnostic use in humans or animals. Not for animal or human consumption.

Purchasers shall not, and agree not to enable third parties to, analyze, copy, reverse engineer or otherwise attempt to determine the structure or sequence of the product.



For full product information, images and publications, please visit our [website](#).

**DATA IMAGES**

**GTX78258 FCM Image**

FACS analysis of human peripheral blood using GTX78258 CD8 antibody [MEM-31] (FITC).



For full product information, images and publications, please visit our [website](https://www.genetex.com).