

## CD9 antibody [MEM-61] (Biotin)

Cat. No. GTX78261

Host	Mouse
Clonality	Monoclonal
Isotype	IgG1
Applications	WB, IHC-P, FCM
Reactivity	Human

References ( 2 )

Package

100 µg

## Applications

## Application Note

\*Optimal dilutions/concentrations should be determined by the researcher.

Suggested dilution	Recommended dilution
WB	Assay dependent
IHC-P	Assay dependent
FCM	Assay dependent

Not tested in other applications.

**Calculated MW** 25 kDa. ( [Note](#) )

**Product Note** This antibody recognizes an epitope on second extracellular domain (EC2) of CD9 antigen.

## Properties

Form	Liquid
Buffer	PBS
Preservative	15mM Sodium azide
Storage	Store as concentrated solution. Centrifuge briefly prior to opening vial. Store at 4°C. DO NOT FREEZE.
Concentration	1 mg/ml (Please refer to the vial label for the specific concentration.)
Immunogen	Pre-B cell line NALM-6.
Purification	Purified IgG
Conjugation	Biotin The reagent is free of unconjugated biotin.



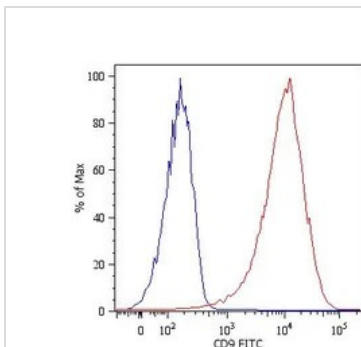
For full product information, images and publications, please visit our [website](#).

For laboratory research use only. Not for any clinical, therapeutic, or diagnostic use in humans or animals. Not for animal or human consumption.

**Note**

Purchasers shall not, and agree not to enable third parties to, analyze, copy, reverse engineer or otherwise attempt to determine the structure or sequence of the product.

## DATA IMAGES



### GTx78261 FCM Image

Surface staining of NALM-6 human pre-B cell leukemia cell line with anti-human CD9: FITC (GTx18241). Total viable cells were used for analysis.



For full product information, images and publications, please visit our [website](#).

Date 2025 / 12 / 28 Page 2 of 2