

# CD11a antibody [MEM-25] (Biotin)

**Cat. No. GTX78266**

<b>Host</b>	Mouse
<b>Clonality</b>	Monoclonal
<b>Isotype</b>	IgG1
<b>Applications</b>	FCM, IP
<b>Reactivity</b>	Human

**Package**  
100 µg

## Applications

### Application Note

\*Optimal dilutions/concentrations should be determined by the researcher.

Suggested dilution	Recommended dilution
FCM	Assay dependent
IP	Assay dependent

Not tested in other applications.

## Properties

<b>Form</b>	Liquid
<b>Buffer</b>	PBS
<b>Preservative</b>	15mM Sodium azide
<b>Storage</b>	Store as concentrated solution. Centrifuge briefly prior to opening vial. Store at 4°C. DO NOT FREEZE.
<b>Concentration</b>	1 mg/ml (Please refer to the vial label for the specific concentration.)
<b>Immunogen</b>	Leukocytes from a patient suffering from a LGL-type leukaemia.
<b>Purification</b>	Purified IgG
<b>Conjugation</b>	Biotin The reagent is free of unconjugated biotin.

### Note

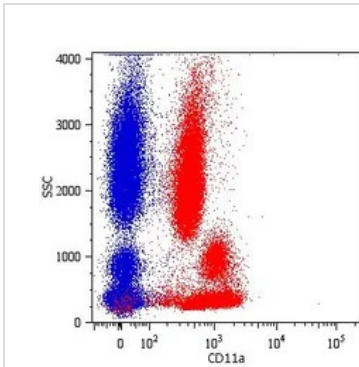
For laboratory research use only. Not for any clinical, therapeutic, or diagnostic use in humans or animals. Not for animal or human consumption.

Purchasers shall not, and agree not to enable third parties to, analyze, copy, reverse engineer or otherwise attempt to determine the structure or sequence of the product.



For full product information, images and publications, please visit our [website](#).

## DATA IMAGES

**GTX78266 FCM Image**

Surface staining of human peripheral blood cells with anti-human CD11a: PE (GTX78268).



For full product information, images and publications, please visit our [website](#).