

## SSEA-1 / CD15 antibody [MEM-158] (Biotin)

Cat. No. GTX78277

Host	Mouse
Clonality	Monoclonal
Isotype	IgM
Applications	FCM, IP
Reactivity	Human

Package  
100 µg

## Applications

## Application Note

\*Optimal dilutions/concentrations should be determined by the researcher.

Suggested dilution	Recommended dilution
FCM	Assay dependent
IP	Assay dependent

Not tested in other applications.

**Product Note** We do not recommend use of this product for Sheep,Bovine,Pig samples.

## Properties

Form	Liquid
Buffer	TBS
Preservative	15mM Sodium azide
Storage	Store as concentrated solution. Centrifuge briefly prior to opening vial. Store at 4°C. DO NOT FREEZE.
Concentration	1 mg/ml (Please refer to the vial label for the specific concentration.)
Immunogen	Human granulocytes
Purification	Purified IgM
Conjugation	Biotin The reagent is free of unconjugated biotin.

## Note

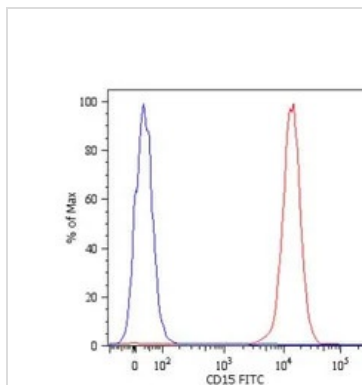
For laboratory research use only. Not for any clinical, therapeutic, or diagnostic use in humans or animals. Not for animal or human consumption.

Purchasers shall not, and agree not to enable third parties to, analyze, copy, reverse engineer or otherwise attempt to determine the structure or sequence of the product.



For full product information, images and publications, please visit our [website](#).

## DATA IMAGES



### GTX78277 FCM Image

Surface staining of human peripheral blood cells with anti-human CD15 (MEM-158) FITC (GTX18272). Cells in the granulocyte gate were used for analysis.



For full product information, images and publications, please visit our [website](#).