

Integrin beta 1 / CD29 antibody [MEM-101A] (Biotin)

Cat. No. GTX78285

Host	Mouse
Clonality	Monoclonal
Isotype	IgG1
Applications	WB, FCM, IP
Reactivity	Human, Dog, Pig

Package
100 µg

Applications

Application Note

*Optimal dilutions/concentrations should be determined by the researcher.

Suggested dilution	Recommended dilution
WB	Assay dependent
FCM	Assay dependent
IP	Assay dependent

Not tested in other applications.

Calculated MW	88 kDa. (Note)
Product Note	We do not recommend use of this product for Mouse samples.

Properties

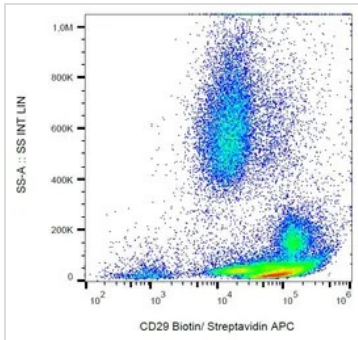
Form	Liquid
Buffer	PBS
Preservative	15mM Sodium azide
Storage	Store as concentrated solution. Centrifuge briefly prior to opening vial. Store at 4°C. DO NOT FREEZE.
Concentration	1 mg/ml (Please refer to the vial label for the specific concentration.)
Immunogen	Raji Burkitt's lymphoma cell line
Purification	Purified IgG
Conjugation	Biotin The reagent is free of unconjugated biotin.

For full product information, images and publications, please visit our [website](#).

For laboratory research use only. Not for any clinical, therapeutic, or diagnostic use in humans or animals. Not for animal or human consumption.

Note

Purchasers shall not, and agree not to enable third parties to, analyze, copy, reverse engineer or otherwise attempt to determine the structure or sequence of the product.

DATA IMAGES

GTX78285 FCM Image

FACS analysis of human peripheral blood using GTX78285 Integrin beta 1 / CD29 antibody [MEM-101A] (Biotin).



For full product information, images and publications, please visit our [website](https://www.genetex.com).