

CD45 antibody [MEM-28] (APC)

Cat. No. GTX78291

Host	Mouse
Clonality	Monoclonal
Isotype	IgG1
Applications	FCM
Reactivity	Human

Package
100 test

Applications

Application Note

*Optimal dilutions/concentrations should be determined by the researcher.

Suggested dilution	Recommended dilution
FCM	10 µl reagent / 100 µl of whole blood or 10 ⁶ cells in a suspension

Not tested in other applications.

Product Note

This antibody reacts with all alternative forms of human CD45 antigen (Leukocyte Common Antigen). We do not recommend use of this product for Horse samples.

Properties

Form	Liquid
Buffer	PBS
Preservative	15mM Sodium azide
Storage	Store as concentrated solution. Centrifuge briefly prior to opening vial. Store at 4°C. DO NOT FREEZE. Protect from light.
Concentration	Batch dependent (Please refer to the vial label for the specific concentration.)
Immunogen	Human thymocytes and T lymphocytes.
Purification	Purified by size-exclusion chromatography
Conjugation	Allophycocyanin (APC) Wavelength

Note

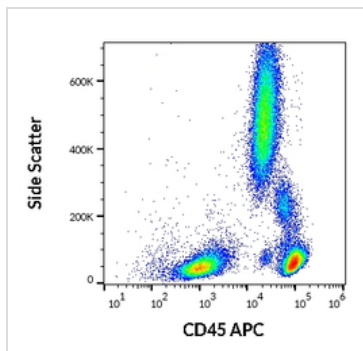
For laboratory research use only. Not for any clinical, therapeutic, or diagnostic use in humans or animals. Not for animal or human consumption.

Purchasers shall not, and agree not to enable third parties to, analyze, copy, reverse engineer or otherwise attempt to determine the structure or sequence of the product.



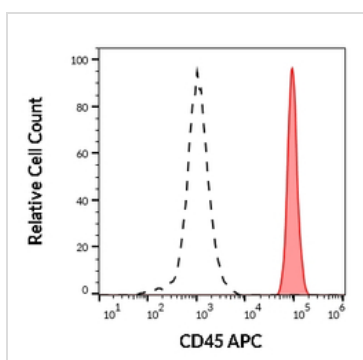
For full product information, images and publications, please visit our [website](#).

DATA IMAGES



GTX78291 FCM Image

FACS analysis of human peripheral blood using GTX78291 CD45 antibody [MEM-28] (APC).
Antibody amount : 10 µl reagent / 100 µl of peripheral whole blood



GTX78291 FCM Image

FACS analysis of human CD45 positive Lymphocytes (red-filled) and human CD45 negative blood debris (black-dashed) using GTX78291 CD45 antibody [MEM-28] (APC).
Antibody amount : 10 µl reagent / 100 µl of peripheral whole blood



For full product information, images and publications, please visit our [website](#).