

CD98 antibody [MEM-108] (FITC)

Cat. No. GTX78326

Host	Mouse
Clonality	Monoclonal
Isotype	IgG1
Applications	FCM
Reactivity	Human

Package
100 test

Applications

Application Note

*Optimal dilutions/concentrations should be determined by the researcher.

Suggested dilution	Recommended dilution
FCM	20 µl reagent / 100 µl of whole blood or 10 ⁶ cells in a suspension
Note : Do not need a permeabilization step.	

Not tested in other applications.

Properties

Form	Liquid
Buffer	PBS
Preservative	15mM Sodium azide
Storage	Store as concentrated solution. Centrifuge briefly prior to opening vial. Store at 4°C. DO NOT FREEZE. Protect from light.
Concentration	Batch dependent (Please refer to the vial label for the specific concentration.)
Immunogen	RAJ1 human Burkitt's lymphoma cell line
Purification	Purified by size-exclusion chromatography
Conjugation	Fluorescein isothiocyanate (FITC) Wavelength

Note

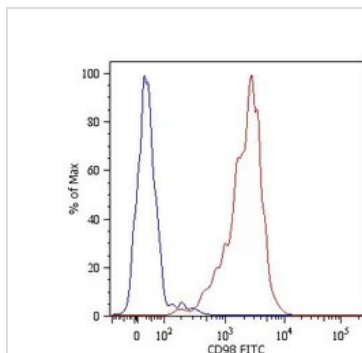
For laboratory research use only. Not for any clinical, therapeutic, or diagnostic use in humans or animals. Not for animal or human consumption.

Purchasers shall not, and agree not to enable third parties to, analyze, copy, reverse engineer or otherwise attempt to determine the structure or sequence of the product.



For full product information, images and publications, please visit our [website](#).

DATA IMAGES

**GTX78326 FCM Image**

Surface staining of human peripheral blood cells with anti-human CD98: FITC (GTX78326). Cells in the monocyte gate were used for analysis.



For full product information, images and publications, please visit our [website](#).