

CD147 antibody [MEM-M6/1] (Biotin)

Cat. No. GTX78329

Host	Mouse
Clonality	Monoclonal
Isotype	IgG1
Applications	WB, IHC-P, FCM, IP
Reactivity	Human

References (2)

Package

100 µg

Applications

Application Note

*Optimal dilutions/concentrations should be determined by the researcher.

Suggested dilution	Recommended dilution
WB	Assay dependent
IHC-P	Assay dependent
FCM	Assay dependent
IP	Assay dependent

Not tested in other applications.

Calculated MW 42 kDa. ([Note](#))

Product Note

This antibody recognizes an epitope in the N-terminal Ig domain (D1) of CD147 (Neurothelin). The antibody MEM-M6/1 is a high-affinity antibody capable of binding to unstimulated peripheral blood T cells.

Properties

Form	Liquid
Buffer	PBS
Preservative	15mM Sodium azide
Storage	Store as concentrated solution. Centrifuge briefly prior to opening vial. Store at 4°C. DO NOT FREEZE.
Concentration	1 mg/ml (Please refer to the vial label for the specific concentration.)
Immunogen	Protein A-CR purified soluble recombinant form of CD147, CD147Rg, which consists of the cDNA coding for the hinge region, CH2-and CH3 domain of human IgG1 (CD147Rg is secreted by transfectants as a dimer).
Purification	Purified IgG
Conjugation	Biotin The reagent is free of unconjugated biotin.

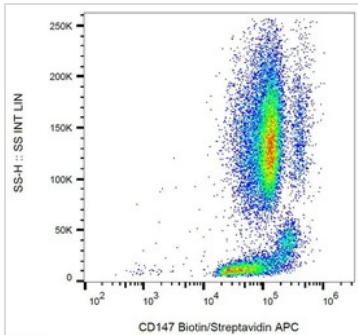


For full product information, images and publications, please visit our [website](#).

For laboratory research use only. Not for any clinical, therapeutic, or diagnostic use in humans or animals. Not for animal or human consumption.

Note

Purchasers shall not, and agree not to enable third parties to, analyze, copy, reverse engineer or otherwise attempt to determine the structure or sequence of the product.

DATA IMAGES

GTX78329 FCM Image

FACS analysis of human peripheral blood using GTX78329 CD147 antibody [MEM-M6/1] (Biotin).



For full product information, images and publications, please visit our [website](#).