

## HLA-G antibody [MEM-G/1] (Biotin)

Cat. No. GTX78331

Host	Mouse
Clonality	Monoclonal
Isotype	IgG1
Applications	WB, IHC-P, IHC-Fr
Reactivity	Human

Package  
100 µg

## Applications

## Application Note

\*Optimal dilutions/concentrations should be determined by the researcher.

Suggested dilution	Recommended dilution
WB	Assay dependent
IHC-P	Assay dependent
IHC-Fr	Assay dependent

Not tested in other applications.

Calculated MW 38 kDa. ( [Note](#) )

Product Note This antibody reacts with denaturated HLA-G heavy chain.

## Properties

Form	Liquid
Buffer	PBS
Preservative	15mM Sodium azide
Storage	Store as concentrated solution. Centrifuge briefly prior to opening vial. Store at 4°C. DO NOT FREEZE.
Concentration	1 mg/ml (Please refer to the vial label for the specific concentration.)
Immunogen	Denatured bacterially expressed recombinant human HLA-G heavy chain.
Purification	Purified IgG
Conjugation	Biotin The reagent is free of unconjugated biotin.

For full product information, images and publications, please visit our [website](#).

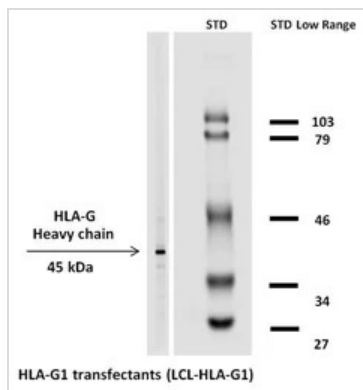
Date 2026 / 02 / 01 Page 1 of 2

For laboratory research use only. Not for any clinical, therapeutic, or diagnostic use in humans or animals. Not for animal or human consumption.

**Note**

Purchasers shall not, and agree not to enable third parties to, analyze, copy, reverse engineer or otherwise attempt to determine the structure or sequence of the product.

## DATA IMAGES



### GTX78331 WB Image

WB analysis of HLA-G1 transfectants using GTX78331 HLA-G antibody [MEM-G/1] (Biotin).



For full product information, images and publications, please visit our [website](https://www.genetex.com).