

## CD34 antibody [4H11(APG)] (Biotin)

Cat. No. GTX78339

Host	Mouse
Clonality	Monoclonal
Isotype	IgG1
Applications	WB, ICC/IF, IHC-P, FCM
Reactivity	Human

References ( 2 )

Package

100 µg

## Applications

## Application Note

\*Optimal dilutions/concentrations should be determined by the researcher.

Suggested dilution	Recommended dilution
WB	Assay dependent
ICC/IF	Assay dependent
IHC-P	Assay dependent
FCM	Assay dependent

Not tested in other applications.

**Calculated MW** 41 kDa. ( [Note](#) )

**Product Note** This antibody reacts with Class III epitope on CD34 (Mucosialin). The antibody 4H11[APG] completely blocks binding of Class II antibody QBEnd10 and Class III antibodies BIRMA K3 and 8G12 on KG1a cell line.

## Properties

Form	Liquid
Buffer	PBS
Preservative	15mM Sodium azide
Storage	Store as concentrated solution. Centrifuge briefly prior to opening vial. Store at 4°C. DO NOT FREEZE.
Concentration	1 mg/ml (Please refer to the vial label for the specific concentration.)
Immunogen	Permanent human cell line derived from peripheral leucocytes of a patient suffering from chronic myeloid leukaemia.
Purification	Purified IgG
Conjugation	Biotin The reagent is free of unconjugated biotin.



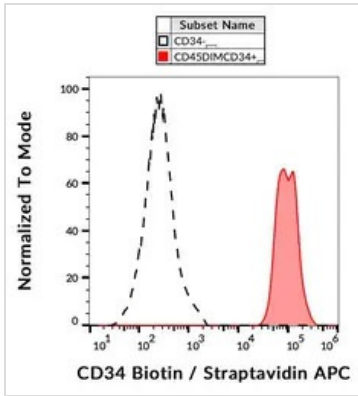
For full product information, images and publications, please visit our [website](#).

For laboratory research use only. Not for any clinical, therapeutic, or diagnostic use in humans or animals. Not for animal or human consumption.

**Note**

Purchasers shall not, and agree not to enable third parties to, analyze, copy, reverse engineer or otherwise attempt to determine the structure or sequence of the product.

## DATA IMAGES



### GTX78339 FCM Image

FACS analysis of human peripheral blood using GTX78339 CD34 antibody [4H11(APG)] (Biotin).



For full product information, images and publications, please visit our [website](#).