

## CD41 antibody [MEM-06] (FITC)

**Cat. No. GTX78347**

<b>Host</b>	Mouse
<b>Clonality</b>	Monoclonal
<b>Isotype</b>	IgG1
<b>Applications</b>	FCM
<b>Reactivity</b>	Human

**Package**  
100 test

## Applications

**Application Note**

\*Optimal dilutions/concentrations should be determined by the researcher.

Suggested dilution	Recommended dilution
FCM	20 µl reagent / 100 µl of whole blood or 10 <sup>6</sup> cells in a suspension
<b>Note : Do not need a permeabilization step.</b>	

Not tested in other applications.

## Properties

<b>Form</b>	Liquid
<b>Buffer</b>	PBS
<b>Preservative</b>	15mM Sodium azide
<b>Storage</b>	Store as concentrated solution. Centrifuge briefly prior to opening vial. Store at 4°C. DO NOT FREEZE. Protect from light.
<b>Concentration</b>	Batch dependent (Please refer to the vial label for the specific concentration.)
<b>Immunogen</b>	Leukocytes of patient suffering from LGL-type leukaemia.
<b>Purification</b>	Purified by size-exclusion chromatography
<b>Conjugation</b>	Fluorescein isothiocyanate (FITC) <a href="#">Wavelength</a>

**Note**

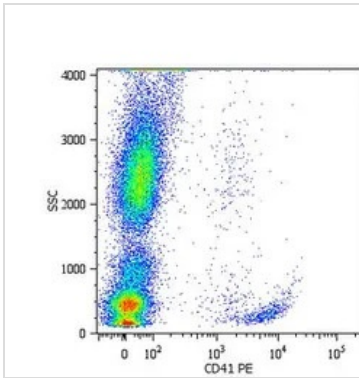
For laboratory research use only. Not for any clinical, therapeutic, or diagnostic use in humans or animals. Not for animal or human consumption.

Purchasers shall not, and agree not to enable third parties to, analyze, copy, reverse engineer or otherwise attempt to determine the structure or sequence of the product.



For full product information, images and publications, please visit our [website](#).

## DATA IMAGES

**GTX78347 FCM Image**

Surface staining of human platelets with anti-human CD41: PE (GTX78348).



For full product information, images and publications, please visit our [website](#).