

HLA-G antibody [MEM-G/11] (FITC)

Cat. No. GTX78370

Host	Mouse
Clonality	Monoclonal
Isotype	IgG1
Application	FACS
Reactivity	Human

Package
100 µg

APPLICATION

Application Note

*Optimal dilutions/concentrations should be determined by the researcher.

Suggested dilution	Recommended dilution
FACS	Assay dependent
Not tested in other applications.	

Calculated MW 38 kDa. ([Note](#))

PROPERTIES

Form	Liquid
Buffer	PBS
Preservative	15mM Sodium azide
Storage	Store as concentrated solution. Centrifuge briefly prior to opening vial. Store at 4°C. DO NOT FREEZE. Protect from light.
Concentration	1 mg/ml (Please refer to the vial label for the specific concentration.)
Immunogen	Recombinant human HLA-G refolded with beta2-microglobulin and peptide.
Purification	Purified by size-exclusion chromatography
Conjugation	Fluorescein isothiocyanate (FITC)

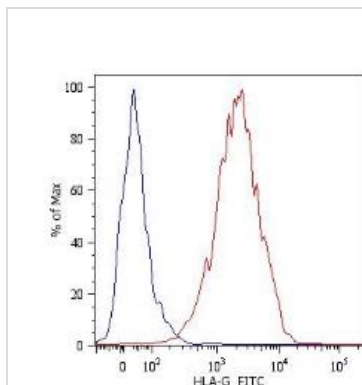
Note

For laboratory research use only. Not for any clinical, therapeutic, or diagnostic use in humans or animals. Not for animal or human consumption.

Purchasers shall not, and agree not to enable third parties to, analyze, copy, reverse engineer or otherwise attempt to determine the structure or sequence of the product.



For full product information, images and publications, please visit our [website](#).

DATA IMAGES

GTx78370 FACS Image

Surface staining of JEG-3 human choriocarcinoma cell line with anti-human HLA-G (MEM-G/11) FITC (GTx78370). Total viable cells were used for analysis.



For full product information, images and publications, please visit our [website](https://www.genetex.com).