

CD20 antibody [LT20] (Biotin)

Cat. No. GTX78378

Host	Mouse
Clonality	Monoclonal
Isotype	IgG2a
Applications	FCM
Reactivity	Human

Package
100 µg

Applications

Application Note

*Optimal dilutions/concentrations should be determined by the researcher.

Suggested dilution	Recommended dilution
FCM	Assay dependent

Not tested in other applications.

Properties

Form	Liquid
Buffer	PBS
Preservative	15mM Sodium azide
Storage	Store as concentrated solution. Centrifuge briefly prior to opening vial. Store at 4°C. DO NOT FREEZE.
Concentration	1 mg/ml (Please refer to the vial label for the specific concentration.)
Immunogen	Normal human lymphocytes from lymph node.
Purification	Purified IgG
Conjugation	Biotin The reagent is free of unconjugated biotin.

Note

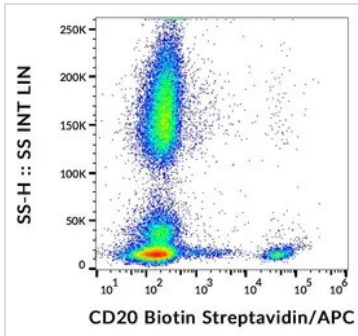
For laboratory research use only. Not for any clinical, therapeutic, or diagnostic use in humans or animals. Not for animal or human consumption.

Purchasers shall not, and agree not to enable third parties to, analyze, copy, reverse engineer or otherwise attempt to determine the structure or sequence of the product.



For full product information, images and publications, please visit our [website](#).

DATA IMAGES



GTX78378 FCM Image

FACS analysis of human peripheral blood using GTX78378 CD20 antibody [LT20] (Biotin).



For full product information, images and publications, please visit our [website](#).