

CD36 antibody [TR9] (APC-Cy7)

Cat. No. GTX78402-15

Host	Mouse
Clonality	Monoclonal
Isotype	IgG1
Applications	FCM
Reactivity	Human

Package
100 test

Applications

Application Note

*Optimal dilutions/concentrations should be determined by the researcher.

Suggested dilution	Recommended dilution
FCM	Assay dependent

Note : Do not need a permeabilization step.

Not tested in other applications.

Product Note

The clone [TR9] cross-blocks binding of FITC-labeled standard clone [OKM5]. Anti-CD36 antibodies inhibit adhesive functions (e.g. adherence of infected erythrocytes to target cells).

Properties

Form	Liquid
Buffer	PBS
Preservative	15mM Sodium azide
Storage	Store as concentrated solution. Centrifuge briefly prior to opening vial. Store at 4°C. DO NOT FREEZE. Protect from light.
Concentration	Batch dependent (Please refer to the vial label for the specific concentration.)
Immunogen	Human platelets
Purification	Purified IgG
Conjugation	Allophycocyanin-Cyanine7 (APC-Cy7) Wavelength

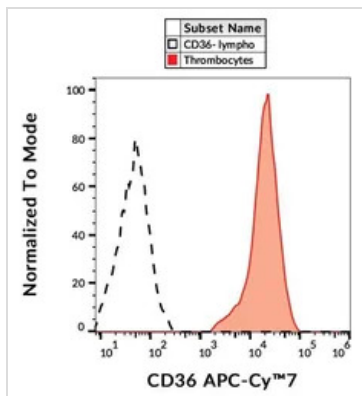
Note

For laboratory research use only. Not for any clinical, therapeutic, or diagnostic use in humans or animals. Not for animal or human consumption.

Purchasers shall not, and agree not to enable third parties to, analyze, copy, reverse engineer or otherwise attempt to determine the structure or sequence of the product.



For full product information, images and publications, please visit our [website](#).

DATA IMAGES

GTX78402-15 FCM Image

FACS analysis of human peripheral blood using GTX78402-15 CD36 antibody [TR9] (APC-Cy7).



For full product information, images and publications, please visit our [website](#).