

beta 2 Microglobulin antibody [B2M-02] (Biotin)

Cat. No. GTX78408

Host	Mouse
Clonality	Monoclonal
Isotype	IgG1
Applications	WB, IHC-P, FCM, ELISA
Reactivity	Human, Pig

Package
100 µg

Applications

Application Note

*Optimal dilutions/concentrations should be determined by the researcher.

Suggested dilution	Recommended dilution
WB	Assay dependent
IHC-P	Assay dependent
FCM	Assay dependent
ELISA	Assay dependent

Not tested in other applications.

Calculated MW 14 kDa. ([Note](#))**Product Note** This antibody reacts with beta2-microglobulin (beta2M) associated with cell-surface MHC Class I molecules and other membrane antigens as well as with soluble beta2-microglobulin.

Properties

Form	Liquid
Buffer	PBS
Preservative	15mM Sodium azide
Storage	Store as concentrated solution. Centrifuge briefly prior to opening vial. Store at 4°C. DO NOT FREEZE.
Concentration	1 mg/ml (Please refer to the vial label for the specific concentration.)
Immunogen	Purified isolated human beta2-microglobulin.
Purification	Purified IgG
Conjugation	Biotin The reagent is free of unconjugated biotin.



For full product information, images and publications, please visit our [website](#).

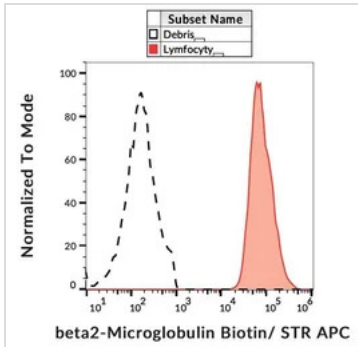
Date 2025 / 12 / 16 Page 1 of 2

For laboratory research use only. Not for any clinical, therapeutic, or diagnostic use in humans or animals. Not for animal or human consumption.

Note

Purchasers shall not, and agree not to enable third parties to, analyze, copy, reverse engineer or otherwise attempt to determine the structure or sequence of the product.

DATA IMAGES



GTx78408 FCM Image

FACS analysis of human peripheral blood using GTx78408 beta 2 Microglobulin antibody [B2M-02] (Biotin).



For full product information, images and publications, please visit our [website](#).