

beta Tubulin 3/ Tuj1 antibody [TU-20] (FITC)

Cat. No. GTX78442

Host	Mouse
Clonality	Monoclonal
Isotype	IgG1
Applications	ICC/IF, FCM, IHC
Reactivity	Human, Mouse, Rat, Bovine, Hamster, Pig, Baboon, Carp

References (6)

Package

100 µg

Applications

Application Note

*Optimal dilutions/concentrations should be determined by the researcher.

Suggested dilution	Recommended dilution
ICC/IF	Assay dependent
FCM	Assay dependent
IHC	Assay dependent

Not tested in other applications.

Product Note This antibody recognizes C-terminal peptide sequence ESESQGPK (aa 441-448) of neuron-specific human betaIII-tubulin.

Properties

Form	Liquid
Buffer	PBS
Preservative	15mM Sodium azide
Storage	Store as concentrated solution. Centrifuge briefly prior to opening vial. Store at 4°C. DO NOT FREEZE. Protect from light.
Concentration	1 mg/ml (Please refer to the vial label for the specific concentration.)
Immunogen	Peptide (C) 441-448 coupled to maleimide-activated keyhole limpet hemocyanin via cysteine added to the N-terminus of the neuron-specific peptide.
Purification	Purified by size-exclusion chromatography
Conjugation	Fluorescein isothiocyanate (FITC) Wavelength

Note

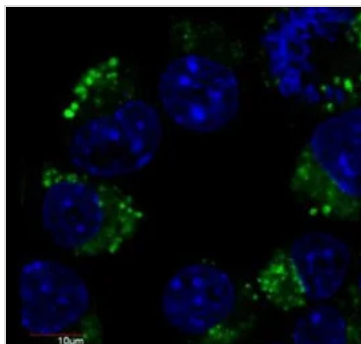
For laboratory research use only. Not for any clinical, therapeutic, or diagnostic use in humans or animals. Not for animal or human consumption.

Purchasers shall not, and agree not to enable third parties to, analyze, copy, reverse engineer or otherwise attempt to determine the structure or sequence of the product.



For full product information, images and publications, please visit our [website](#).

DATA IMAGES



GTX78442 ICC/IF Image

ICC/IF analysis of Neuro2a cells using GTX78442 beta Tubulin 3/ Tuj1 antibody [TU-20] (FITC).

Green : Primary antibody

Blue : DAPI

Diultion : 1µg/ml



For full product information, images and publications, please visit our [website](#).