

Rb (phospho Ser795) antibody

Cat. No. GTX78954

| | |
|---------------------|------------|
| Host | Rabbit |
| Clonality | Polyclonal |
| Isotype | IgG |
| Applications | WB, IHC-P |
| Reactivity | Human |

Package
100 µg

Applications

Application Note

*Optimal dilutions/concentrations should be determined by the researcher.

| Suggested dilution | Recommended dilution |
|--------------------|----------------------|
| WB | 1:500 - 1:1000 |
| IHC-P | 1:50 - 1:100 |

Not tested in other applications.

Calculated MW 106 kDa. ([Note](#))

Properties

| | |
|----------------------|--|
| Form | Liquid |
| Buffer | PBS, 150mM NaCl, 50% Glycerol |
| Preservative | 0.02% Sodium azide |
| Storage | Store as concentrated solution. Centrifuge briefly prior to opening vial. For short-term storage (1-2 weeks), store at 4°C. For long-term storage, aliquot and store at -20°C or below. Avoid multiple freeze-thaw cycles. |
| Concentration | Batch dependent (Please refer to the vial label for the specific concentration.) |
| Immunogen | The antiserum was produced against synthesized phosphopeptide derived from human Rb around the phosphorylation site of serine 795 (P-S-Sp-P-L). |
| Purification | Purified by sequential chromatography on phospho- and non-phospho-peptide affinity columns. From serum |
| Conjugation | Unconjugated |

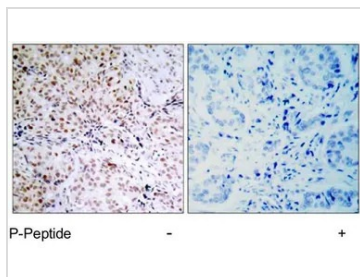
Note

For laboratory research use only. Not for any clinical, therapeutic, or diagnostic use in humans or animals. Not for animal or human consumption.

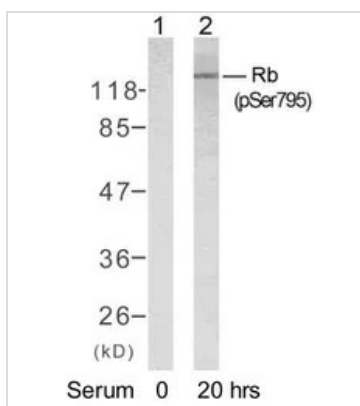
Purchasers shall not, and agree not to enable third parties to, analyze, copy, reverse engineer or otherwise attempt to determine the structure or sequence of the product.



For full product information, images and publications, please visit our [website](#).

DATA IMAGES

GTXT78954 IHC-P Image

IHC-P analysis of human breast carcinoma tissue using GTXT78954 Rb (phospho Ser795) antibody.


GTXT78954 WB Image

WB analysis of K562 cells untreated or treated with 10% serum (after 48 hours of starvation) lysates using GTXT78954 Rb (phospho Ser795) antibody.



For full product information, images and publications, please visit our [website](https://www.genetex.com).