

## Raf1 (phospho Ser259) antibody

**Cat. No. GTX78955**

<b>Host</b>	Rabbit
<b>Clonality</b>	Polyclonal
<b>Isotype</b>	IgG
<b>Applications</b>	WB, IHC-P
<b>Reactivity</b>	Human

References ( 1 )

Package

100 µg

## Applications

**Application Note**

\*Optimal dilutions/concentrations should be determined by the researcher.

Suggested dilution	Recommended dilution
WB	1:500 - 1:1000
IHC-P	1:50 - 1:100

Not tested in other applications.

**Calculated MW** 73 kDa. ( [Note](#) )

## Properties

<b>Form</b>	Liquid
<b>Buffer</b>	PBS, 150mM NaCl, 0.5% BSA, 50% glycerol (Please contact us for BSA-free format)
<b>Preservative</b>	0.02% Sodium azide
<b>Storage</b>	Store as concentrated solution. Centrifuge briefly prior to opening vial. For short-term storage (1-2 weeks), store at 4°C. For long-term storage, aliquot and store at -20°C or below. Avoid multiple freeze-thaw cycles.
<b>Concentration</b>	Batch dependent (Please refer to the vial label for the specific concentration.)
<b>Immunogen</b>	The antiserum was produced against synthesized phosphopeptide derived from human Raf-1 around the phosphorylation site of serine 259 (S-T-Sp-T-P).
<b>Purification</b>	Purified by sequential chromatography on phospho- and non-phospho-peptide affinity columns. From serum
<b>Conjugation</b>	Unconjugated

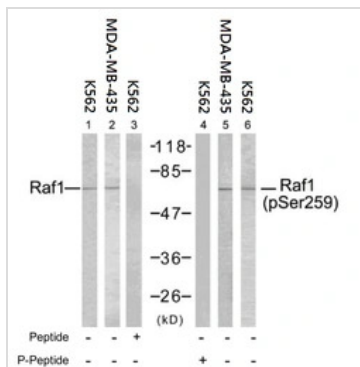
**Note**

For laboratory research use only. Not for any clinical, therapeutic, or diagnostic use in humans or animals. Not for animal or human consumption.

Purchasers shall not, and agree not to enable third parties to, analyze, copy, reverse engineer or otherwise attempt to determine the structure or sequence of the product.

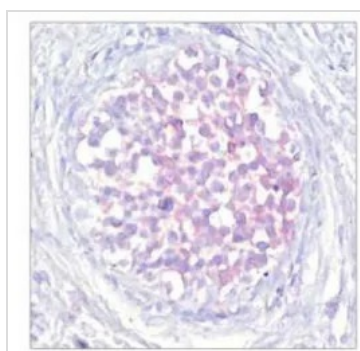
For full product information, images and publications, please visit our [website](#).

## DATA IMAGES



### GTX78955 WB Image

WB analysis of K562 and MDA-MB-435 cell lysates using GTX78955 Raf1 (phospho Ser259) antibody (Lane 4, 5, and 6) and Raf1 antibody (Lane 1, 2, and 3).



### GTX78955 IHC-P Image

IHC-P analysis of human breast carcinoma tissue using GTX78955 Raf1 (phospho Ser259) antibody.



For full product information, images and publications, please visit our [website](https://www.genetex.com).