

PKC beta 2 (phospho Thr641) antibody

Cat. No. GTX78969

Host	Rabbit
Clonality	Polyclonal
Isotype	IgG
Applications	WB, IHC-P
Reactivity	Human

Package
100 µg

Applications

Application Note

*Optimal dilutions/concentrations should be determined by the researcher.

Suggested dilution	Recommended dilution
WB	1:500 - 1:1000
IHC-P	1:50 - 1:100

Not tested in other applications.

Calculated MW 77 kDa. ([Note](#))

Properties

Form	Liquid
Buffer	PBS, 150mM NaCl, 0.5% BSA, 50% glycerol (Please contact us for BSA-free format)
Preservative	0.02% Sodium azide
Storage	Store as concentrated solution. Centrifuge briefly prior to opening vial. For short-term storage (1-2 weeks), store at 4°C. For long-term storage, aliquot and store at -20°C or below. Avoid multiple freeze-thaw cycles.
Concentration	Batch dependent (Please refer to the vial label for the specific concentration.)
Immunogen	The antiserum was produced against synthesized phosphopeptide derived from human PKCβ around the phosphorylation site of threonine 641 (E-L-Tp-P-T).
Purification	Purified by sequential chromatography on phospho- and non-phospho-peptide affinity columns. From serum
Conjugation	Unconjugated

Note

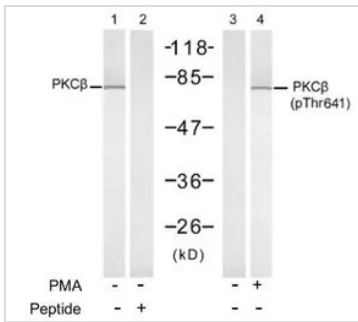
For laboratory research use only. Not for any clinical, therapeutic, or diagnostic use in humans or animals. Not for animal or human consumption.

Purchasers shall not, and agree not to enable third parties to, analyze, copy, reverse engineer or otherwise attempt to determine the structure or sequence of the product.



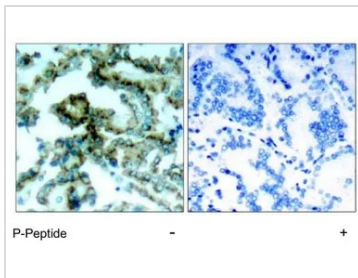
For full product information, images and publications, please visit our [website](#).

DATA IMAGES



GTx78969 WB Image

WB analysis of K562 cells untreated or treated with PMA (1ng/ml, 10min) lysates using GTx78969 PKC beta 2 (phospho Thr641) antibody (Lane 3 and 4) and PKC beta 2 antibody (Lane 1 and 2).



GTx78969 IHC-P Image

IHC-P analysis of human lung carcinoma tissue using GTx78969 PKC beta 2 (phospho Thr641) antibody.



For full product information, images and publications, please visit our [website](https://www.genetex.com).