

## p38 MAPK (phospho Tyr182) antibody

Cat. No. GTX78989

|              |                      |
|--------------|----------------------|
| Host         | Rabbit               |
| Clonality    | Polyclonal           |
| Isotype      | IgG                  |
| Applications | WB, IHC-P            |
| Reactivity   | Human, Mouse, Monkey |

Package  
100 µg

## Applications

## Application Note

\*Optimal dilutions/concentrations should be determined by the researcher.

| Suggested dilution | Recommended dilution |
|--------------------|----------------------|
| WB                 | 1:500 - 1:1000       |
| IHC-P              | 1:50 - 1:100         |

Not tested in other applications.

Calculated MW 41 kDa. ( [Note](#) )

## Properties

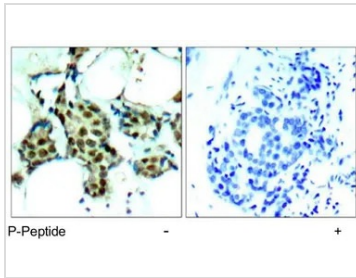
|               |  |
|---------------|--|
| Form          | Liquid   |
| Buffer        | PBS, 150mM NaCl, 0.5% BSA, 50% glycerol (Please contact us for BSA-free format)  |
| Preservative  | 0.02% Sodium azide   |
| Storage       | Store as concentrated solution. Centrifuge briefly prior to opening vial. For short-term storage (1-2 weeks), store at 4°C. For long-term storage, aliquot and store at -20°C or below. Avoid multiple freeze-thaw cycles. |
| Concentration | Batch dependent (Please refer to the vial label for the specific concentration.)   |
| Immunogen     | The antiserum was produced against synthesized phosphopeptide derived from human p38 MAPK around the phosphorylation site of tyrosine 182 (T-G-Yp-V-A).  |
| Purification  | Purified by sequential chromatography on phospho- and non-phospho-peptide affinity columns.<br>From serum  |
| Conjugation   | Unconjugated   |

## Note

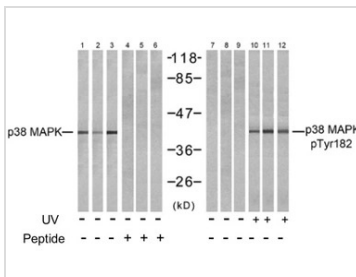
For laboratory research use only. Not for any clinical, therapeutic, or diagnostic use in humans or animals. Not for animal or human consumption.

Purchasers shall not, and agree not to enable third parties to, analyze, copy, reverse engineer or otherwise attempt to determine the structure or sequence of the product.

For full product information, images and publications, please visit our [website](#).

**DATA IMAGES**

**GTX78989 IHC-P Image**

IHC-P analysis of human breast carcinoma tissue using GTX78989 p38 MAPK (phospho Tyr182) antibody.


**GTX78989 WB Image**

WB analysis of NIH-3T3 (Line 1, 4, 7 and 10), COS7 (Line 2, 5, 8 and 11), and K562 (Line 3, 6, 9 and 12) cells, untreated or treated with UV (20min) lysates using GTX78989 p38 MAPK (phospho Tyr182) antibody.

Lane 1 - 6 : p38 MAPK antibody

Lane 7 - 12 : GTX78989 p38 MAPK (phospho Tyr182) antibody



For full product information, images and publications, please visit our [website](https://www.genetex.com).