

MyoD1 (phospho Ser200) antibody

Cat. No. GTX79004

Host	Rabbit
Clonality	Polyclonal
Isotype	IgG
Applications	WB
Reactivity	Human

Package
100 µg

Applications

Application Note

*Optimal dilutions/concentrations should be determined by the researcher.

Suggested dilution	Recommended dilution
--------------------	----------------------

WB	1:500 - 1:1000
----	----------------

Not tested in other applications.

Calculated MW	34 kDa. (Note)
----------------------	----------------------------------

Properties

Form	Liquid
-------------	--------

Buffer	PBS, 150mM NaCl, 0.5% BSA, 50% glycerol (Please contact us for BSA-free format)
---------------	---

Preservative	0.02% Sodium azide
---------------------	--------------------

Storage	Store as concentrated solution. Centrifuge briefly prior to opening vial. For short-term storage (1-2 weeks), store at 4°C. For long-term storage, aliquot and store at -20°C or below. Avoid multiple freeze-thaw cycles.
----------------	--

Concentration	Batch dependent (Please refer to the vial label for the specific concentration.)
----------------------	--

Immunogen	The antiserum was produced against synthesized phosphopeptide derived from human MyoD around the phosphorylation site of serine 200 (A-S-Sp-P-R).
------------------	---

Purification	Purified by sequential chromatography on phospho- and non-phospho-peptide affinity columns. From serum
---------------------	---

Conjugation	Unconjugated
--------------------	--------------

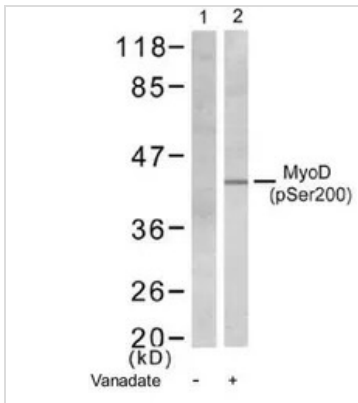
Note	For laboratory research use only. Not for any clinical, therapeutic, or diagnostic use in humans or animals. Not for animal or human consumption.
-------------	---

Note	Purchasers shall not, and agree not to enable third parties to, analyze, copy, reverse engineer or otherwise attempt to determine the structure or sequence of the product.
-------------	---



For full product information, images and publications, please visit our [website](#).

DATA IMAGES

**GTX79004 WB Image**

WB analysis of HeLa cells untreated or treated with vanadate (1mg/ml, 30min) lysates using GTX79004 MyoD1 (phospho Ser200) antibody.



For full product information, images and publications, please visit our [website](#).