

IRS1 (phospho Ser636) antibody

Cat. No. GTX79037

Host	Rabbit
Clonality	Polyclonal
Isotype	IgG
Applications	WB, IHC-P
Reactivity	Human

Package
100 µg

Applications

Application Note

*Optimal dilutions/concentrations should be determined by the researcher.

Suggested dilution	Recommended dilution
WB	1:500 - 1:1000
IHC-P	1:50 - 1:100

Not tested in other applications.

Calculated MW 132 kDa. ([Note](#))

Properties

Form	Liquid
Buffer	PBS, 150mM NaCl, 50% Glycerol
Preservative	0.02% Sodium azide
Storage	Store as concentrated solution. Centrifuge briefly prior to opening vial. For short-term storage (1-2 weeks), store at 4°C. For long-term storage, aliquot and store at -20°C or below. Avoid multiple freeze-thaw cycles.
Concentration	Batch dependent (Please refer to the vial label for the specific concentration.)
Immunogen	The antiserum was produced against synthesized phosphopeptide derived from human IRS-1 around the phosphorylation site of serine 636 (P-M-Sp-P-K).
Purification	Purified by sequential chromatography on phospho- and non-phospho-peptide affinity columns. From serum
Conjugation	Unconjugated

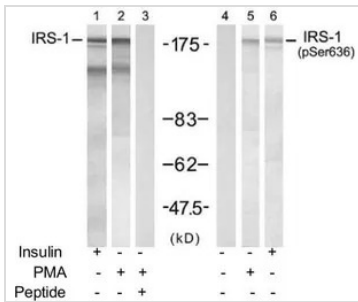
Note

For laboratory research use only. Not for any clinical, therapeutic, or diagnostic use in humans or animals. Not for animal or human consumption.

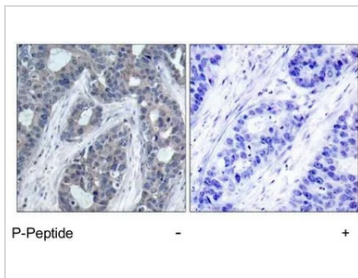
Purchasers shall not, and agree not to enable third parties to, analyze, copy, reverse engineer or otherwise attempt to determine the structure or sequence of the product.



For full product information, images and publications, please visit our [website](#).

DATA IMAGES

GTX79037 WB Image

WB analysis of 293 cells treated with insulin(100nM, 30min) or PMA (0.2μM, 15min) lysates using GTX79037 IRS1 (phospho Ser636) antibody (Lane 4, 5, and 6) and IRS1 antibody (Lane 1, 2, and 3).


GTX79037 IHC-P Image

IHC-P analysis of human breast carcinoma tissue using GTX79037 IRS1 (phospho Ser636) antibody.



For full product information, images and publications, please visit our [website](https://www.genetex.com).