

IGF1R beta (phospho Tyr1131) / Insulin Receptor beta (phospho Tyr1146) antibody

Cat. No. GTX79046

Host	Rabbit
Clonality	Polyclonal
Isotype	IgG
Applications	WB, IHC-P
Reactivity	Human

Package

100 µg

Applications

Application Note

*Optimal dilutions/concentrations should be determined by the researcher.

Suggested dilution	Recommended dilution
WB	1:500 - 1:1000
IHC-P	1:50 - 1:100

Not tested in other applications.

Calculated MW 155 kDa. ([Note](#))

Product Note Tyr1161 in full-length IGF-1R is equivalent to Tyr1131 in signal peptide cleaved IGF1R, and Tyr1185 in full-length Insulin Receptor is equivalent to Tyr1146 in signal peptide cleaved Insulin Receptor.

Properties

Form	Liquid
Buffer	PBS, 150mM NaCl, 0.5% BSA, 50% glycerol (Please contact us for BSA-free format)
Preservative	0.02% Sodium azide
Storage	Store as concentrated solution. Centrifuge briefly prior to opening vial. For short-term storage (1-2 weeks), store at 4°C. For long-term storage, aliquot and store at -20°C or below. Avoid multiple freeze-thaw cycles.
Concentration	Batch dependent (Please refer to the vial label for the specific concentration.)
Immunogen	The antiserum was produced against synthesized phosphopeptide derived from human IGF-1R around the phosphorylation site of tyrosine 1161 (D-I-Yp-E-T), which is equivalent to Tyrosine 1131 in signal peptide cleaved IGF1R.
Purification	Purified by sequential chromatography on phospho- and non-phospho-peptide affinity columns. From serum
Conjugation	Unconjugated



For full product information, images and publications, please visit our [website](#).

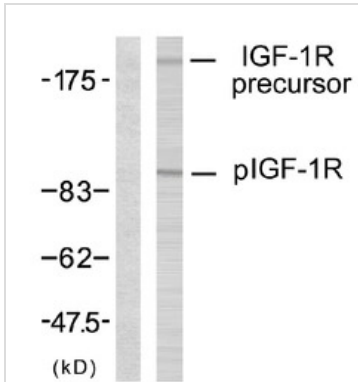
Date 2026 / 01 / 16 Page 1 of 2

For laboratory research use only. Not for any clinical, therapeutic, or diagnostic use in humans or animals. Not for animal or human consumption.

Note

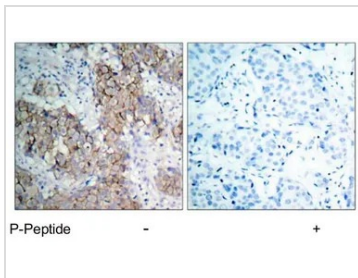
Purchasers shall not, and agree not to enable third parties to, analyze, copy, reverse engineer or otherwise attempt to determine the structure or sequence of the product.

DATA IMAGES



GTx79046 WB Image

WB analysis of 293 cells untreated (left) or treated(right) with Insulin using GTx79046 IGF1R beta (phospho Tyr1131) / Insulin Receptor beta (phospho Tyr1146) antibody.



GTx79046 IHC-P Image

IHC-P analysis of human breast carcinoma tissue using GTx79046 IGF1R beta (phospho Tyr1131) / Insulin Receptor beta (phospho Tyr1146) antibody.



For full product information, images and publications, please visit our [website](#).