

ELK1 (phospho Thr417) antibody

Cat. No. GTX79085

Host	Rabbit
Clonality	Polyclonal
Isotype	IgG
Applications	ICC/IF, IHC-P
Reactivity	Human

Package
100 µg

Applications

Application Note

*Optimal dilutions/concentrations should be determined by the researcher.

Suggested dilution	Recommended dilution
ICC/IF	1:100 - 1:200
IHC-P	1:50 - 1:100

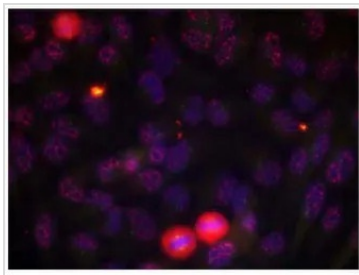
Not tested in other applications.

Properties

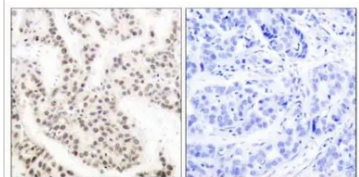
Form	Liquid
Buffer	PBS, 150mM NaCl, 50% Glycerol
Preservative	0.02% Sodium azide
Storage	Store as concentrated solution. Centrifuge briefly prior to opening vial. For short-term storage (1-2 weeks), store at 4°C. For long-term storage, aliquot and store at -20°C or below. Avoid multiple freeze-thaw cycles.
Concentration	Batch dependent (Please refer to the vial label for the specific concentration.)
Immunogen	The antiserum was produced against synthesized phosphopeptide derived from human Elk-1 around the phosphorylation site of threonine 417 (L-S-Tp-P-V).
Purification	Purified by sequential chromatography on phospho- and non-phospho-peptide affinity columns. From serum
Conjugation	Unconjugated
Note	For laboratory research use only. Not for any clinical, therapeutic, or diagnostic use in humans or animals. Not for animal or human consumption. Purchasers shall not, and agree not to enable third parties to, analyze, copy, reverse engineer or otherwise attempt to determine the structure or sequence of the product.



For full product information, images and publications, please visit our [website](#).

DATA IMAGES

GTX79085 ICC/IF Image

ICC/IF analysis of methanol-fixed HeLa cells using GTX79085 ELK1 (phospho Thr417) antibody.
Red : Primary antibody


GTX79085 IHC-P Image

IHC-P analysis of human breast carcinoma tissue using GTX79085 ELK1 (phospho Thr417) antibody.

P-Peptide - +



For full product information, images and publications, please visit our [website](#).