

## ELK1 (phospho Thr417) antibody

**Cat. No. GTX79085**

<b>Host</b>	Rabbit
<b>Clonality</b>	Polyclonal
<b>Isotype</b>	IgG
<b>Applications</b>	ICC/IF, IHC-P
<b>Reactivity</b>	Human

**Package**  
100 µg

## Applications

**Application Note**

\*Optimal dilutions/concentrations should be determined by the researcher.

Suggested dilution	Recommended dilution
ICC/IF	1:100 - 1:200
IHC-P	1:50 - 1:100

Not tested in other applications.

## Properties

<b>Form</b>	Liquid
<b>Buffer</b>	PBS, 150mM NaCl, 50% Glycerol
<b>Preservative</b>	0.02% Sodium azide
<b>Storage</b>	Store as concentrated solution. Centrifuge briefly prior to opening vial. For short-term storage (1-2 weeks), store at 4°C. For long-term storage, aliquot and store at -20°C or below. Avoid multiple freeze-thaw cycles.
<b>Concentration</b>	Batch dependent (Please refer to the vial label for the specific concentration.)
<b>Immunogen</b>	The antiserum was produced against synthesized phosphopeptide derived from human Elk-1 around the phosphorylation site of threonine 417 (L-S-Tp-P-V).
<b>Purification</b>	Purified by sequential chromatography on phospho- and non-phospho-peptide affinity columns. From serum
<b>Conjugation</b>	Unconjugated

**Note**

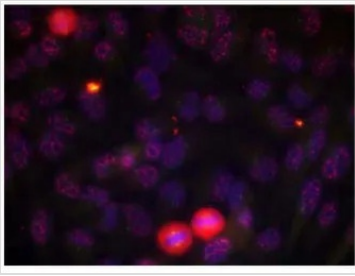
For laboratory research use only. Not for any clinical, therapeutic, or diagnostic use in humans or animals. Not for animal or human consumption.

Purchasers shall not, and agree not to enable third parties to, analyze, copy, reverse engineer or otherwise attempt to determine the structure or sequence of the product.

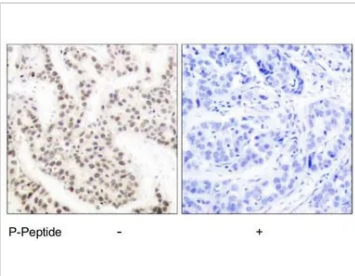


For full product information, images and publications, please visit our [website](#).

## DATA IMAGES

**GTX79085 ICC/IF Image**

ICC/IF analysis of methanol-fixed HeLa cells using GTX79085 ELK1 (phospho Thr417) antibody.  
Red : Primary antibody

**GTX79085 IHC-P Image**

IHC-P analysis of human breast carcinoma tissue using GTX79085 ELK1 (phospho Thr417) antibody.



For full product information, images and publications, please visit our [website](#).