

alpha 1 Catenin (phospho Ser641) antibody

Cat. No. GTX79145

Host	Rabbit
Clonality	Polyclonal
Isotype	IgG
Applications	WB, ICC/IF
Reactivity	Human, Mouse, Dog

References (2)

Package

100 µg

Applications

Application Note

*Optimal dilutions/concentrations should be determined by the researcher.

Suggested dilution	Recommended dilution
WB	1:500 - 1:1000
ICC/IF	Assay dependent

Not tested in other applications.

Calculated MW 100 kDa. ([Note](#))

Properties

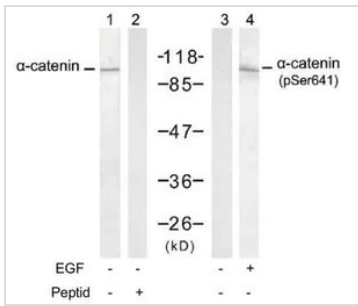
Form	Liquid
Buffer	PBS, 150mM NaCl, 0.5% BSA, 50% glycerol (Please contact us for BSA-free format)
Preservative	0.02% Sodium azide
Storage	Store as concentrated solution. Centrifuge briefly prior to opening vial. For short-term storage (1-2 weeks), store at 4°C. For long-term storage, aliquot and store at -20°C or below. Avoid multiple freeze-thaw cycles.
Concentration	Batch dependent (Please refer to the vial label for the specific concentration.)
Immunogen	The antiserum was produced against synthesized phosphopeptide derived from human α -catenin around the phosphorylation site of serine 641 (D-D-Sp-D-F).
Purification	Purified by sequential chromatography on phospho- and non-phospho-peptide affinity columns. From serum
Conjugation	Unconjugated

Note

For laboratory research use only. Not for any clinical, therapeutic, or diagnostic use in humans or animals. Not for animal or human consumption.

Purchasers shall not, and agree not to enable third parties to, analyze, copy, reverse engineer or otherwise attempt to determine the structure or sequence of the product.

For full product information, images and publications, please visit our [website](#).

DATA IMAGES

GTX79145 WB Image

WB analysis of A431 cells untreated or treated with EGF (200ng/ml, 30min) lysates using GTX79145 alpha 1 Catenin (phospho Ser641) antibody (Lane 3 and 4) and alpha 1 Catenin antibody (Lane 1 and 2).



For full product information, images and publications, please visit our [website](#).