

# SSTR5 antibody

**Cat. No. GTX79168**

<b>Host</b>	Rabbit
<b>Clonality</b>	Polyclonal
<b>Isotype</b>	IgG
<b>Applications</b>	WB, ICC/IF, IHC-P
<b>Reactivity</b>	Human, Mouse, Rat

References ( 1 )

Package

100 µl

## Applications

### Application Note

\*Optimal dilutions/concentrations should be determined by the researcher.

Suggested dilution	Recommended dilution
WB	1:5000
ICC/IF	1:5000
IHC-P	1:2000

Not tested in other applications.

## Properties

<b>Form</b>	Liquid
<b>Buffer</b>	Serum
<b>Preservative</b>	0.02% Sodium azide
<b>Storage</b>	Store as concentrated solution. Centrifuge briefly prior to opening vial. For short-term storage (1-2 weeks), store at 4°C. For long-term storage, aliquot and store at -20°C or below. Avoid multiple freeze-thaw cycles.
<b>Immunogen</b>	Synthetic peptide corresponding to the C-terminal amino acids Q(344)ATLPTRSCSEANGLMQTSRI(363) of SSTR5
<b>Purification</b>	Unpurified
<b>Conjugation</b>	Unconjugated

### Note

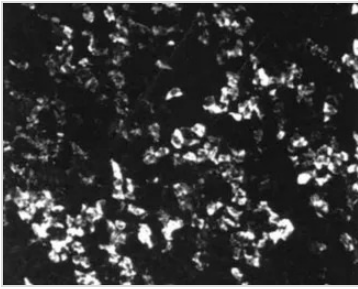
For laboratory research use only. Not for any clinical, therapeutic, or diagnostic use in humans or animals. Not for animal or human consumption.

Purchasers shall not, and agree not to enable third parties to, analyze, copy, reverse engineer or otherwise attempt to determine the structure or sequence of the product.



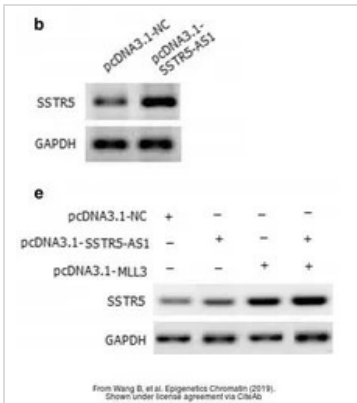
For full product information, images and publications, please visit our [website](#).

DATA IMAGES



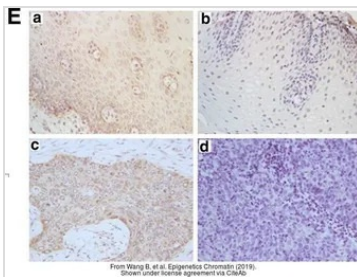
**GTx79168 ICC/IF Image**

ICC/IF analysis of rat pituitary cells using GTx79168 SSTR5 antibody.



**GTx79168 WB Image**

The data was published in the journal Epigenetics Chromatin in 2019. [PMID: 31196171](https://pubmed.ncbi.nlm.nih.gov/31196171/)



**GTx79168 IHC-P Image**

The data was published in the journal Epigenetics Chromatin in 2019. [PMID: 31196171](https://pubmed.ncbi.nlm.nih.gov/31196171/)



For full product information, images and publications, please visit our [website](https://www.genetex.com).