

Melanopsin antibody

Cat. No. GTX79191

Host	Rabbit
Clonality	Polyclonal
Isotype	IgG
Applications	WB, ICC/IF, IHC-P, IHC
Reactivity	Mouse, Rat, Hamster

Package
100 µg

Applications

Application Note

*Optimal dilutions/concentrations should be determined by the researcher.

Suggested dilution	Recommended dilution
WB	1-4 µg/ml
ICC/IF	10 µg/ml
IHC-P	Assay dependent
IHC	Assay dependent

Not tested in other applications.

Calculated MW 52 kDa. ([Note](#))

Properties

Form	Liquid
Buffer	PBS, 0.1% BSA
Preservative	0.05% Sodium azide
Storage	Store as concentrated solution. Centrifuge briefly prior to opening vial. For short-term storage (1-2 weeks), store at 4°C. For long-term storage, aliquot and store at -20°C or below. Avoid multiple freeze-thaw cycles.
Concentration	1 mg/ml (Please refer to the vial label for the specific concentration.)
Immunogen	Synthetic peptide corresponding to residues K M(1) N S P S E S R V P S S L T Q D P S F(19) of rat melanopsin.
Purification	Purified by antigen-affinity chromatography
Conjugation	Unconjugated

Note

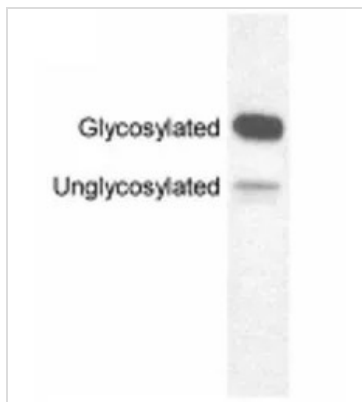
For laboratory research use only. Not for any clinical, therapeutic, or diagnostic use in humans or animals. Not for animal or human consumption.

Purchasers shall not, and agree not to enable third parties to, analyze, copy, reverse engineer or otherwise attempt to determine the structure or sequence of the product.



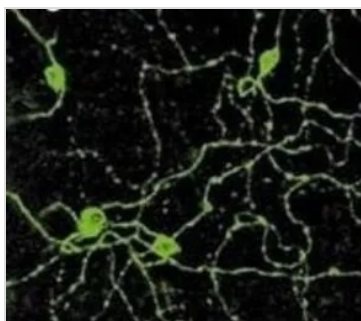
For full product information, images and publications, please visit our [website](#).

DATA IMAGES



GTXT79191 WB Image

WB analysis of overexpressed melanopsin in HEK293 cells using GTXT79191 Melanopsin antibody.



GTXT79191 ICC/IF Image

ICC/IF analysis of rat retinal ganglion cells using GTXT79191 Melanopsin antibody.



For full product information, images and publications, please visit our [website](#).