

## Recoverin antibody [6a55 cd6]

**Cat. No. GTX79211**

|                     |                           |
|---------------------|---------------------------|
| <b>Host</b>         | Mouse                     |
| <b>Clonality</b>    | Monoclonal                |
| <b>Isotype</b>      | IgG                       |
| <b>Applications</b> | WB, ICC/IF, IHC-P, ELISA  |
| <b>Reactivity</b>   | Human, Rat, Sheep, Bovine |

**Package**  
100 µg

## Applications

**Application Note**

\*Optimal dilutions/concentrations should be determined by the researcher.

| Suggested dilution | Recommended dilution |
|--------------------|----------------------|
| WB                 | 1:100-1:1000         |
| ICC/IF             | 1:10-1:200           |
| IHC-P              | 1:10-1:500           |
| ELISA              | Assay dependent      |

Not tested in other applications.

**Calculated MW** 23 kDa. ([Note](#))

## Properties

|                      |  |
|----------------------|--|
| <b>Form</b>          | Liquid   |
| <b>Buffer</b>        | PBS, 0.1% BSA  |
| <b>Preservative</b>  | 0.05% Sodium azide   |
| <b>Storage</b>       | Store as concentrated solution. Centrifuge briefly prior to opening vial. For short-term storage (1-2 weeks), store at 4°C. For long-term storage, aliquot and store at -20°C or below. Avoid multiple freeze-thaw cycles. |
| <b>Concentration</b> | 1 mg/ml (Please refer to the vial label for the specific concentration.)   |
| <b>Immunogen</b>     | Proprietary Immunogen.   |
| <b>Purification</b>  | Protein A purified   |
| <b>Conjugation</b>   | Unconjugated   |

**Note**

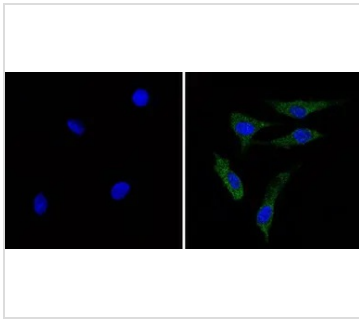
For laboratory research use only. Not for any clinical, therapeutic, or diagnostic use in humans or animals. Not for animal or human consumption.

Purchasers shall not, and agree not to enable third parties to, analyze, copy, reverse engineer or otherwise attempt to determine the structure or sequence of the product.



For full product information, images and publications, please visit our [website](#).

## DATA IMAGES

**GTX79211 ICC/IF Image**

ICC/IF analysis of C6 cells using GTX79211 Recoverin antibody [6a55 cd6]. Cells were probed without (left) or with(right) an antibody.

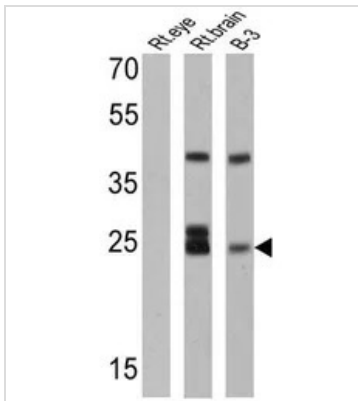
Green : Primary antibody

Blue : Nuclei

Fixation : Formalin

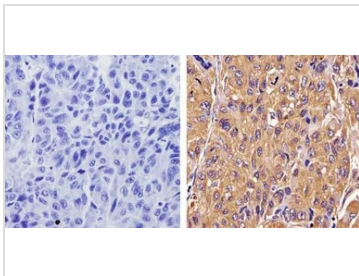
Permeabilization : 0.1% Triton X-100 in TBS for 5-10 minute

Dilution : 1:100 incubated overnight at 4 °C

**GTX79211 WB Image**

WB analysis of 25 ug of rat eye (lane 1), rat brain (lane 2) and B-3 (lane 3) cell lysates using GTX79211 Recoverin antibody [6a55 cd6].

Dilution : 1:500

**GTX79211 IHC-P Image**

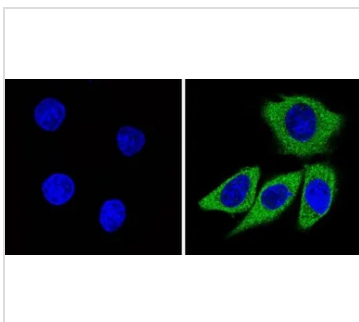
IHC-P analysis of human hepatocarcinoma tissue using GTX79211 Recoverin antibody [6a55 cd6].

Right : Primary antibody

Left : Negative control without primary antibody

Antigen retrieval : 10mM sodium citrate (pH 6.0), microwaved for 8-15 min

Dilution : 1:50

**GTX79211 ICC/IF Image**

ICC/IF analysis of L6 cells using GTX79211 Recoverin antibody [6a55 cd6]. Cells were probed without (left) or with(right) an antibody.

Green : Primary antibody

Blue : Nuclei

Fixation : Formalin

Permeabilization : 0.1% Triton X-100 in TBS for 5-10 minute

Dilution : 1:50 and incubated overnight



For full product information, images and publications, please visit our [website](#).