

TCR V beta 8b antibody [MX-6] (FITC)

Cat. No. GTX79220

Host	Mouse
Clonality	Monoclonal
Isotype	IgG2a
Applications	ICC/IF, IHC-Fr, FCM, IP, Activation, IHC
Reactivity	Human

Package
200 test

Applications

Application Note

*Optimal dilutions/concentrations should be determined by the researcher.

Suggested dilution	Recommended dilution
ICC/IF	Assay dependent
IHC-Fr	Assay dependent
FCM	Assay dependent
IP	Assay dependent
Activation	Assay dependent
IHC	Assay dependent

Not tested in other applications.

Properties

Form	Liquid
Buffer	PBS, 0.5% BSA, Glycerol
Preservative	0.1% Sodium azide
Storage	Store as concentrated solution. Centrifuge briefly prior to opening vial. Store at 4°C. Protect from light.
Concentration	0.1 mg/ml (Please refer to the vial label for the specific concentration.)
Immunogen	Human TCR Vbeta8
Purification	Protein G purified
Conjugation	Fluorescein isothiocyanate (FITC) Wavelength

Note

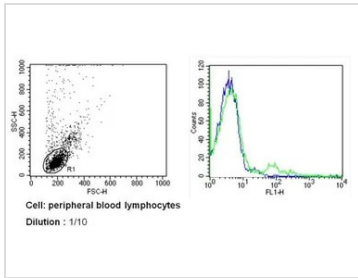
For laboratory research use only. Not for any clinical, therapeutic, or diagnostic use in humans or animals. Not for animal or human consumption.

Purchasers shall not, and agree not to enable third parties to, analyze, copy, reverse engineer or otherwise attempt to determine the structure or sequence of the product.



For full product information, images and publications, please visit our [website](#).

DATA IMAGES

**GTX79220 FCM Image**

FACS analysis of PBMC cells using GTX79220 TCR V beta 8b antibody [MX-6] (FITC) compared to an isotype control (blue).

Dilution : 1:10 incubated for 30 min at 4°C



For full product information, images and publications, please visit our [website](#).