

## TCR V delta 1 antibody [TS8.2] (FITC)

**Cat. No. GTX79223**

<b>Host</b>	Mouse
<b>Clonality</b>	Monoclonal
<b>Isotype</b>	IgG1
<b>Applications</b>	ICC/IF, FCM, IHC, Neutralizing /Inhibition
<b>Reactivity</b>	Human, Primate

References ( 3 )

Package

200 test

## Applications

**Application Note**

\*Optimal dilutions/concentrations should be determined by the researcher.

Suggested dilution	Recommended dilution
ICC/IF	Assay dependent
FCM	1-2 µg/test
IHC	Assay dependent
Neutralizing /Inhibition	Assay dependent

Not tested in other applications.

## Properties

<b>Form</b>	Liquid
<b>Buffer</b>	PBS, Glycerol, 0.5% BSA
<b>Preservative</b>	0.1% Sodium azide
<b>Storage</b>	Store as concentrated solution. Centrifuge briefly prior to opening vial. Store at 4°C. Protect from light.
<b>Concentration</b>	0.15 mg/ml (Please refer to the vial label for the specific concentration.)
<b>Immunogen</b>	Human TCR V delta 1
<b>Purification</b>	Protein G purified
<b>Conjugation</b>	Fluorescein isothiocyanate (FITC) <a href="#">Wavelength</a>

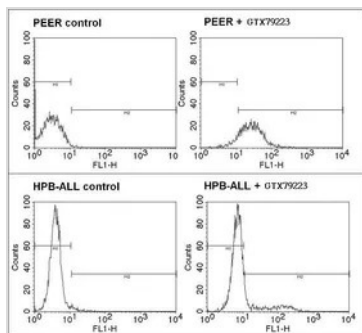
**Note**

For laboratory research use only. Not for any clinical, therapeutic, or diagnostic use in humans or animals. Not for animal or human consumption.

Purchasers shall not, and agree not to enable third parties to, analyze, copy, reverse engineer or otherwise attempt to determine the structure or sequence of the product.

For full product information, images and publications, please visit our [website](#).

DATA IMAGES



**GTX79223 FCM Image**

FACS analysis of positive PEER cells (top panel) or negative control HPB-ALL cells (bottom panel) using GTX79223 TCR V delta 1 antibody [TS8.2] (FITC).

Dilution : 5ul of primary antibody were used per test



For full product information, images and publications, please visit our [website](#).