

TCR V alpha 2 antibody [F1] (FITC)

Cat. No. GTX79225

Host	Mouse
Clonality	Monoclonal
Isotype	IgG2a
Applications	WB, FCM, IHC
Reactivity	Human, Primate

Package
200 test

Applications

Application Note

*Optimal dilutions/concentrations should be determined by the researcher.

Suggested dilution	Recommended dilution
WB	Assay dependent
FCM	1-2 µg/test
IHC	Assay dependent

Not tested in other applications.

Properties

Form	Liquid
Buffer	PBS, 0.5% BSA
Preservative	0.1% Sodium azide
Storage	Store as concentrated solution. Centrifuge briefly prior to opening vial. Store at 4°C. Protect from light.
Concentration	0.15 mg/ml (Please refer to the vial label for the specific concentration.)
Immunogen	Human TCR V alpha-2
Purification	Protein A purified
Conjugation	Fluorescein isothiocyanate (FITC) Wavelength

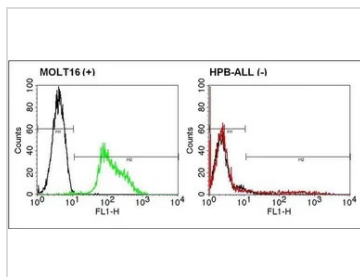
Note

For laboratory research use only. Not for any clinical, therapeutic, or diagnostic use in humans or animals. Not for animal or human consumption.

Purchasers shall not, and agree not to enable third parties to, analyze, copy, reverse engineer or otherwise attempt to determine the structure or sequence of the product.



For full product information, images and publications, please visit our [website](#).

DATA IMAGES

GTX79225 FCM Image

FACS analysis of positive MOLT16 cells (left panel) or negative control HPB-ALL cells (right panel) using GTX79225 TCR V alpha 2 antibody [F1] (FITC).

Dilution : 5ul of primary antibody were used per test



For full product information, images and publications, please visit our [website](https://www.genetex.com).

Date 2026 / 01 / 29 Page 2 of 2